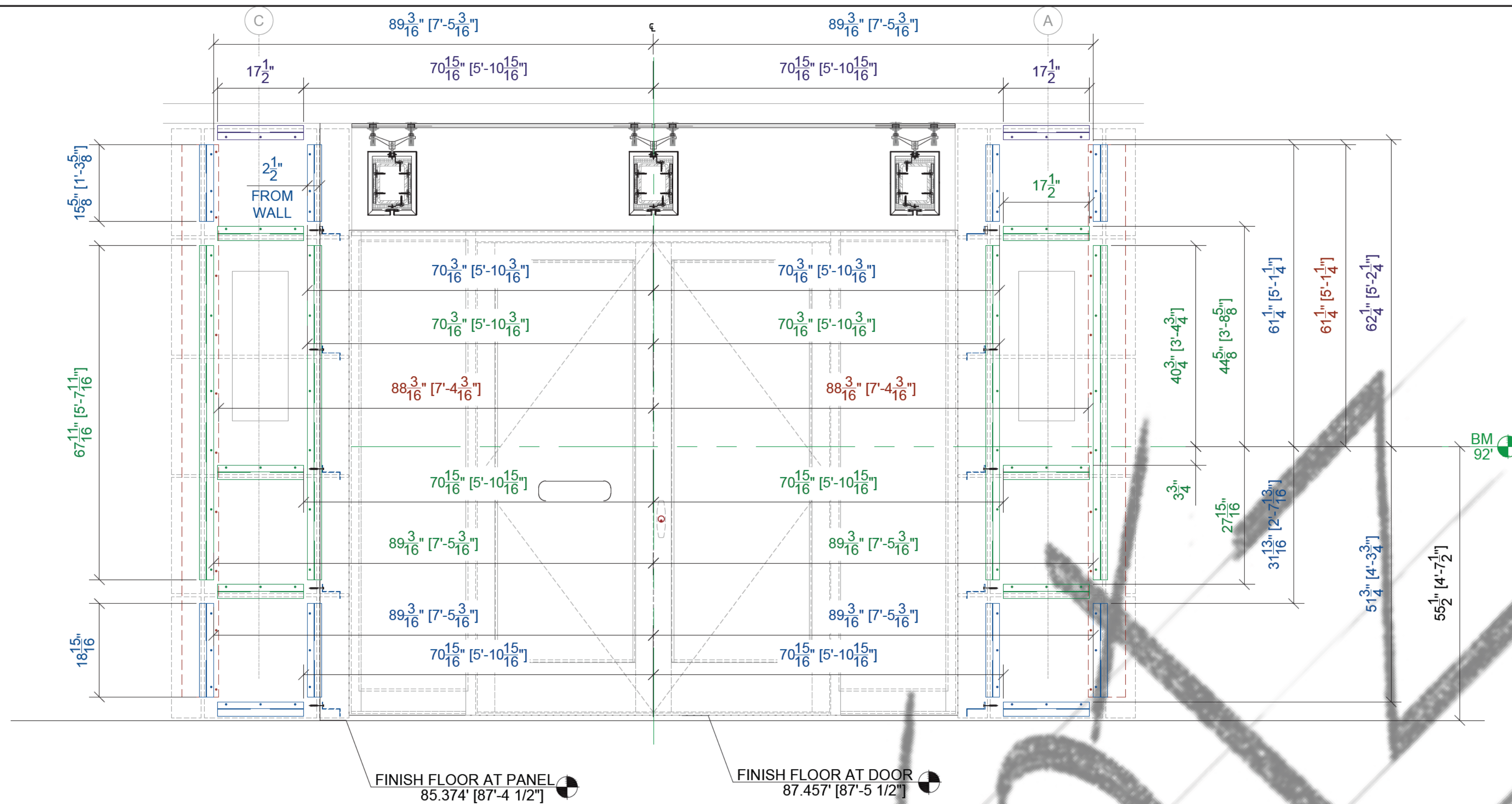


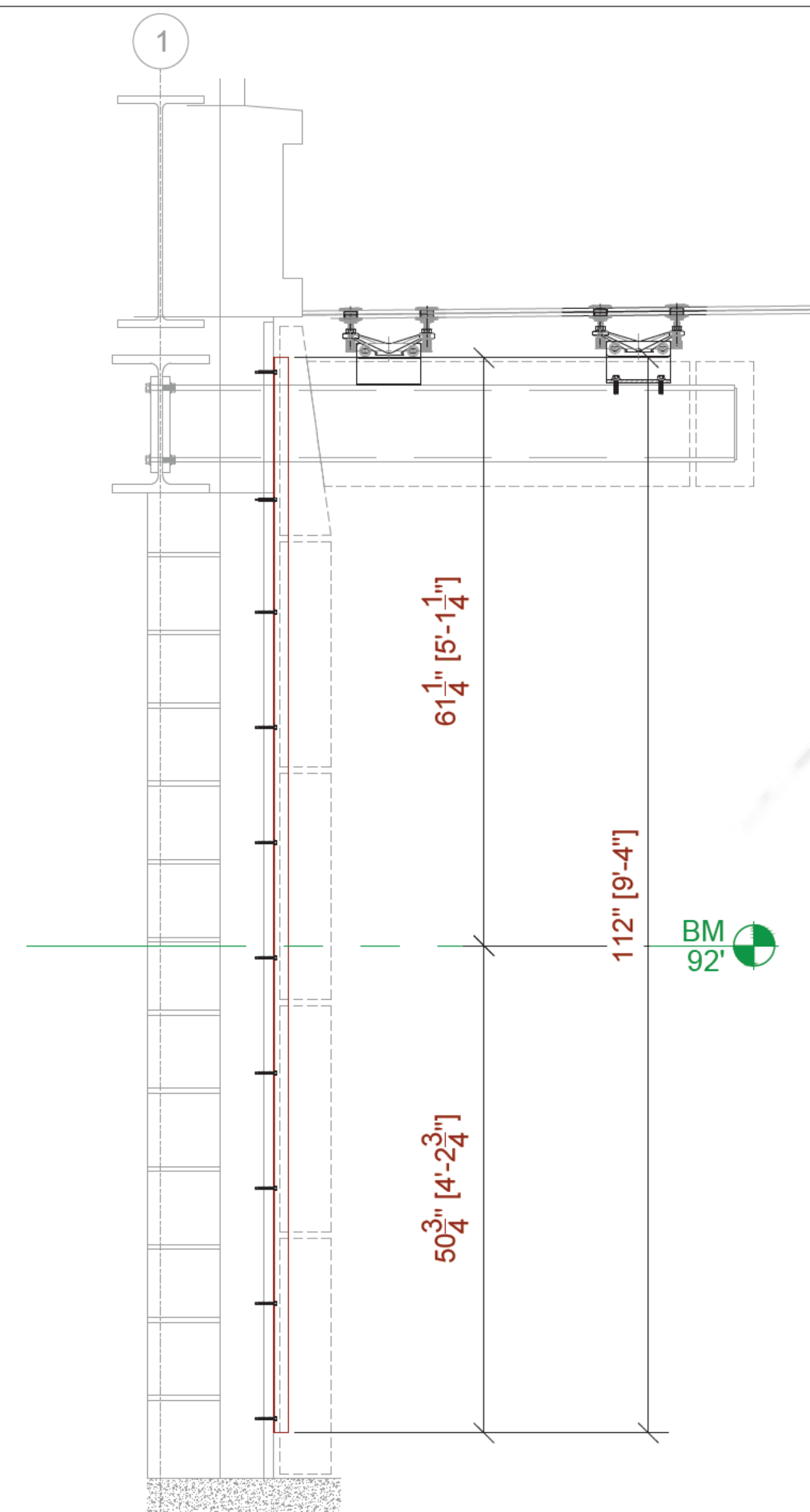
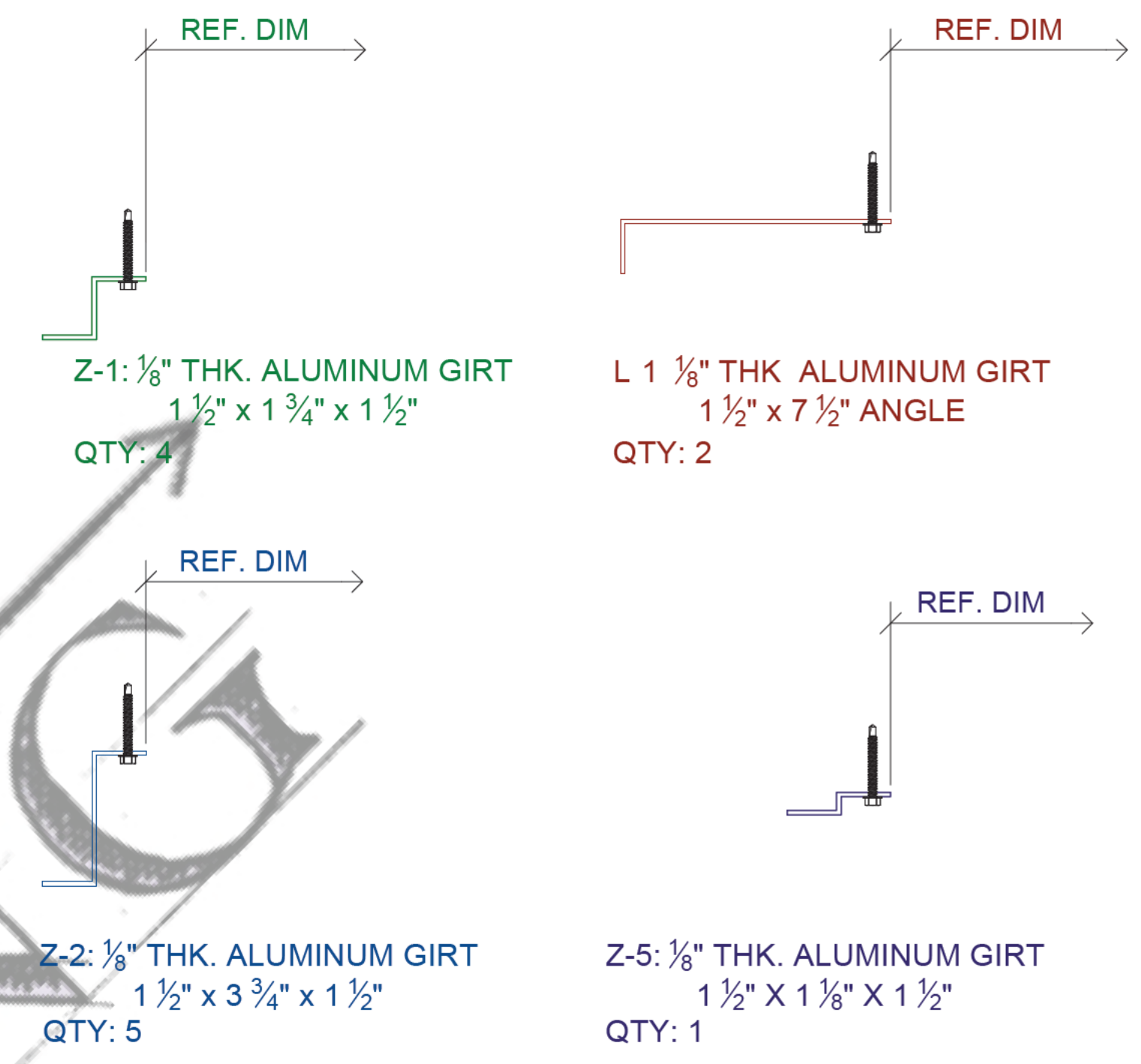
# SAMPLE DRAWINGS

TITLE:	ELEVATIONS, SECTION AND PLANS
SCALE:	1" = 1'-0"
SHEET #:	200

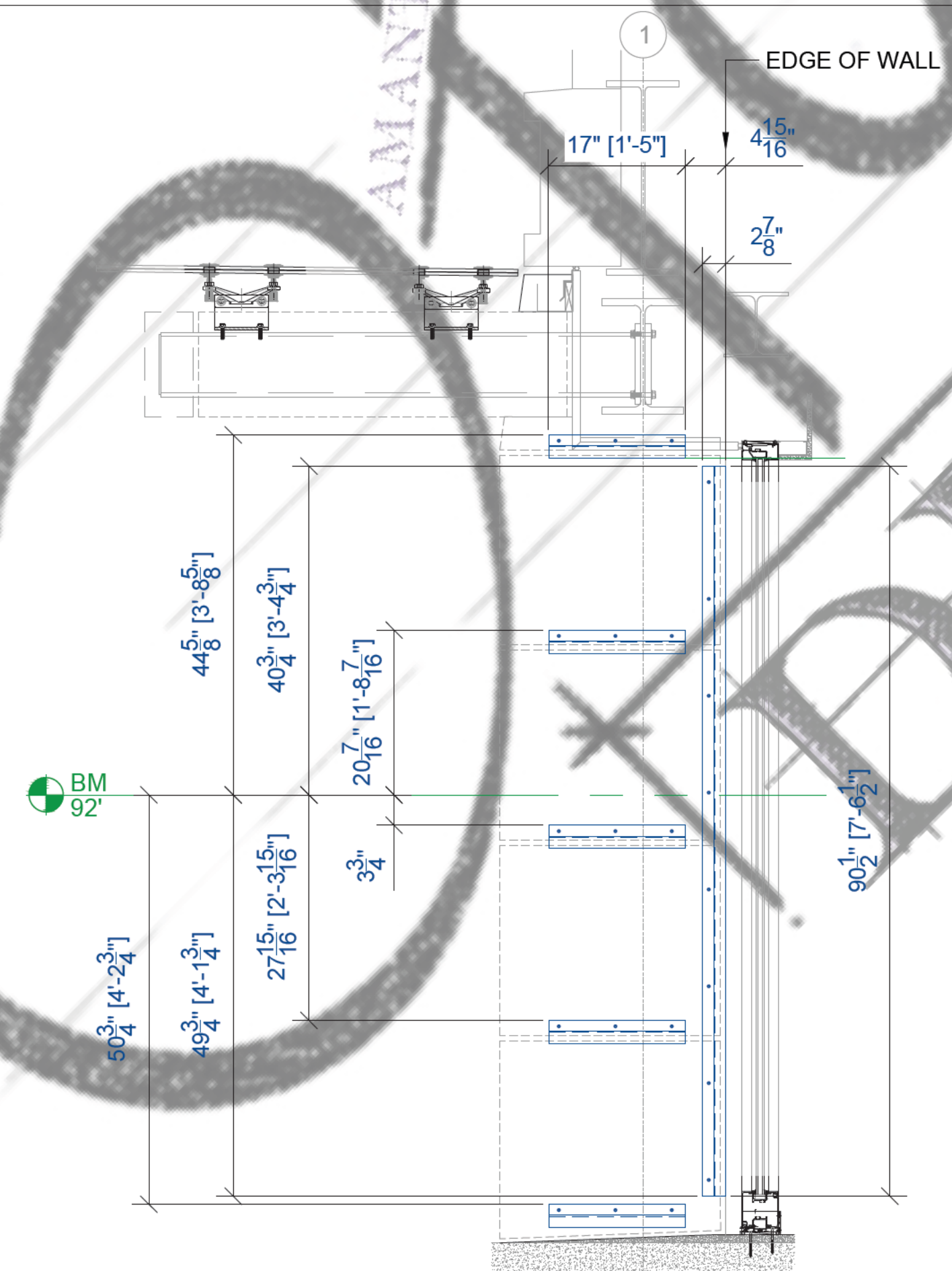




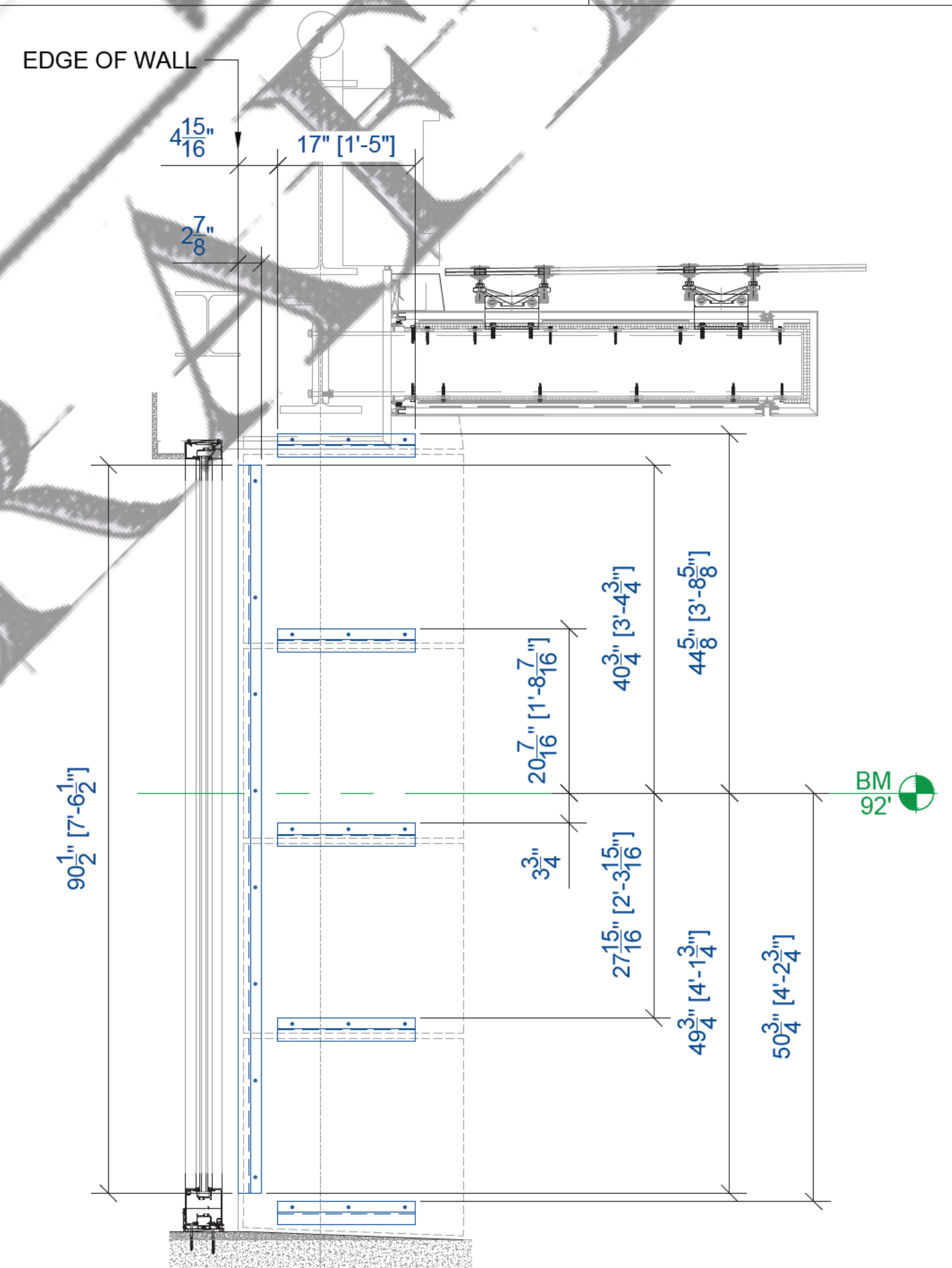
1 NORTH ELEVATION AT VESTIBULE  
SCALE: 3/4" = 1'-0"



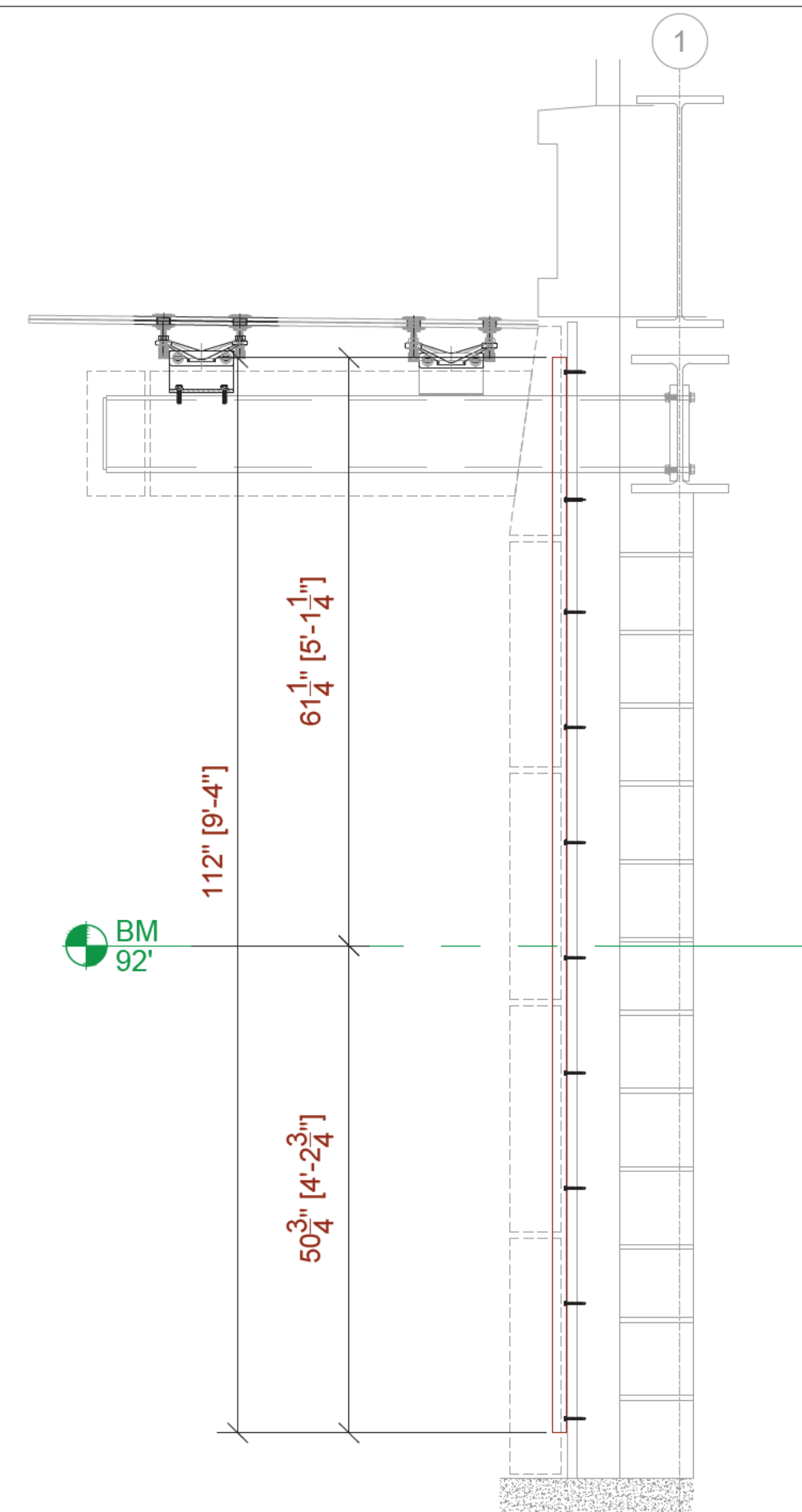
2 ELEVATION AT VESTIBULE  
SCALE: 3/4" = 1'-0"



3 SECTION AT VESTIBULE  
SCALE: 3/4" = 1'-0"



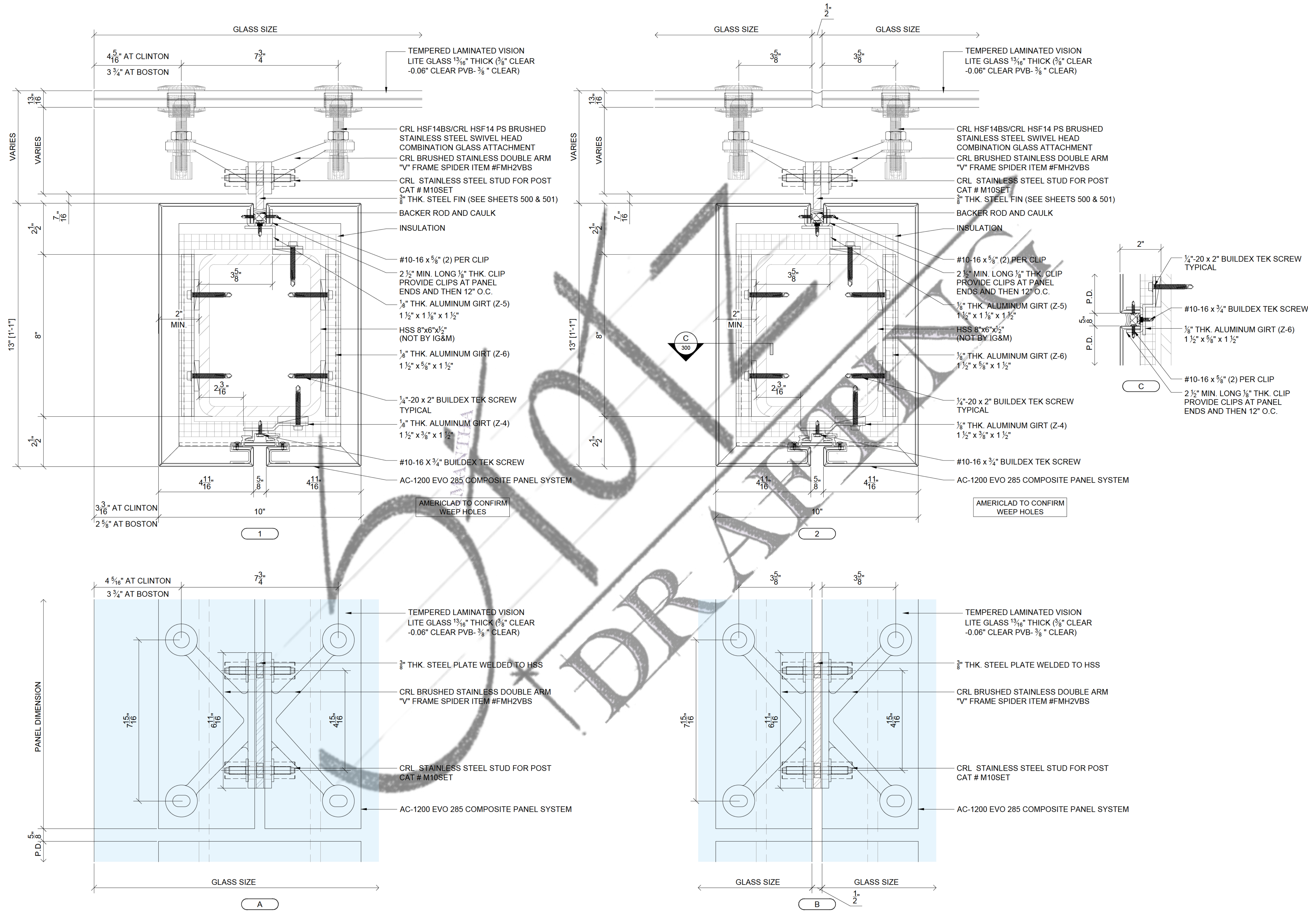
4 SECTION AT VESTIBULE  
SCALE: 3/4" = 1'-0"



5 ELEVATION AT VESTIBULE  
SCALE: 3/4" = 1'-0"

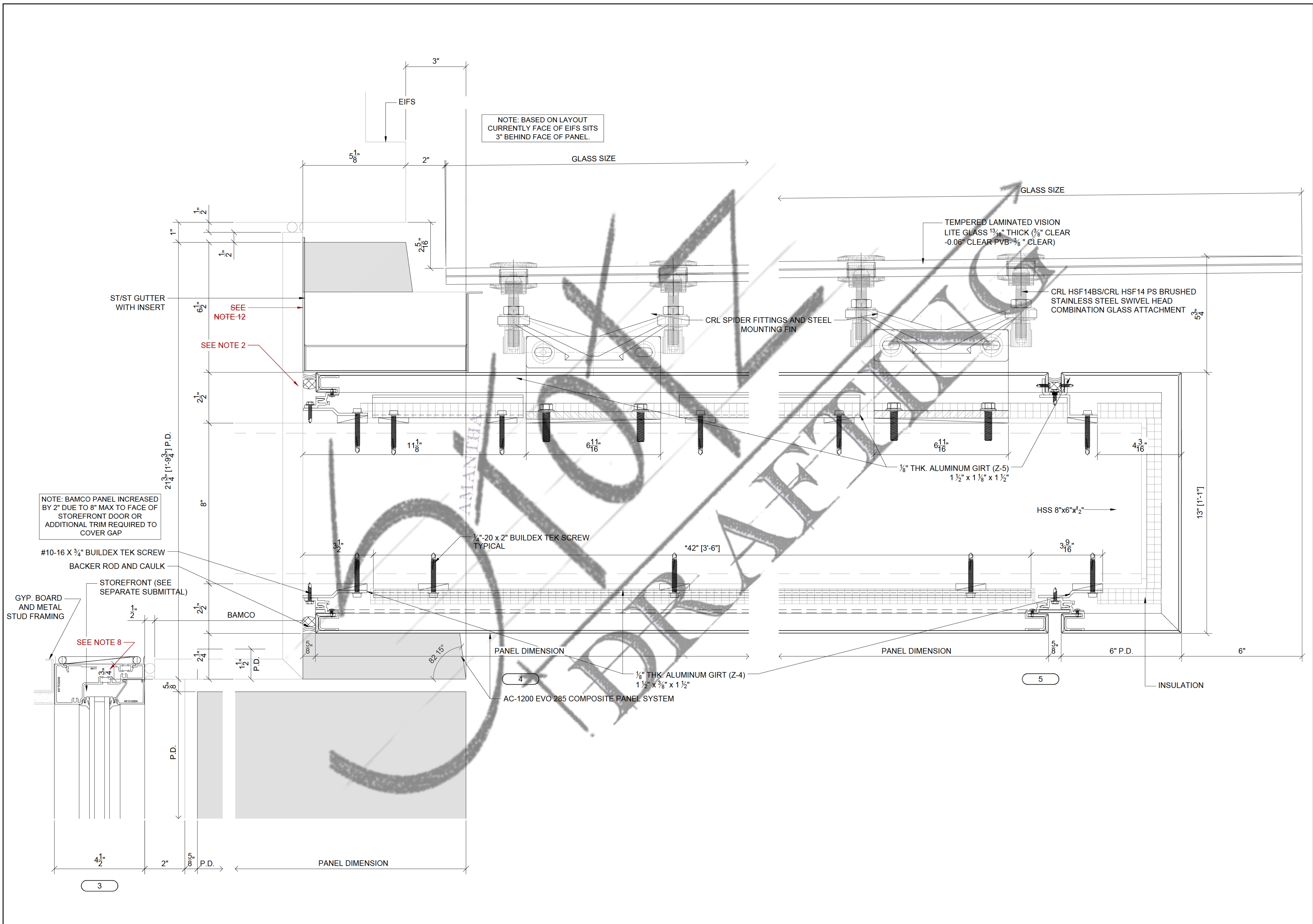
SAMPLE DRAWINGS

TITLE:	ELEVATIONS, SECTION AND PLANS
SCALE:	3/4" = 1'-0"
SHEET #:	200B



SAMPLE DRAWINGS

TITLE:	SECTION AND DETAILS
SCALE:	6" = 1'-0"
SHEET #:	300



# SAMPLE DRAWINGS

<b>TITLE:</b>	SECTION AND DETAILS
<b>SCALE:</b>	6" = 1'-0"
<b>SHEET #:</b>	301

# SAMPLE DRAWINGS

**NOTE :**  
CONTACT ENGINEER IF NOT FILLED SOLID

1/8" THK. ALUMINUM GIRT (Z-2)  
1 1/2" x 3 3/4" x 1 1/2" Z FASTENED  
TO CMU WITH 1/4" HILTI KWIK CON II

STEEL  
NOTE: CMU INTERFERES WITH STEEL

1/8" THK. ALUMINUM GIRT (Z-2)  
1 1/2" x 3 3/4" x 1 1/2" Z FASTENED  
TO 16 GA. FLAT WITH 1/4"-20 x 2"  
BUILDEX TEK SCREW

1/8" THK. ALUMINUM BENT SHAPE  
(END CAP ON TOP SIDE ONLY)  
FINISH: PAINTED "WEATHERED ZINC"

NOTE: BAMCO PANEL INCREASED  
BY 2" DUE TO 8" MAX TO FACE OF  
STOREFRONT DOOR.  
ADDITIONAL TRIM REQUIRED TO  
COVER CMU (

NOTE: BASED ON LAYOUT  
CURRENTLY FACE OF EIFS SITS  
3" BEHIND FACE OF PANEL.

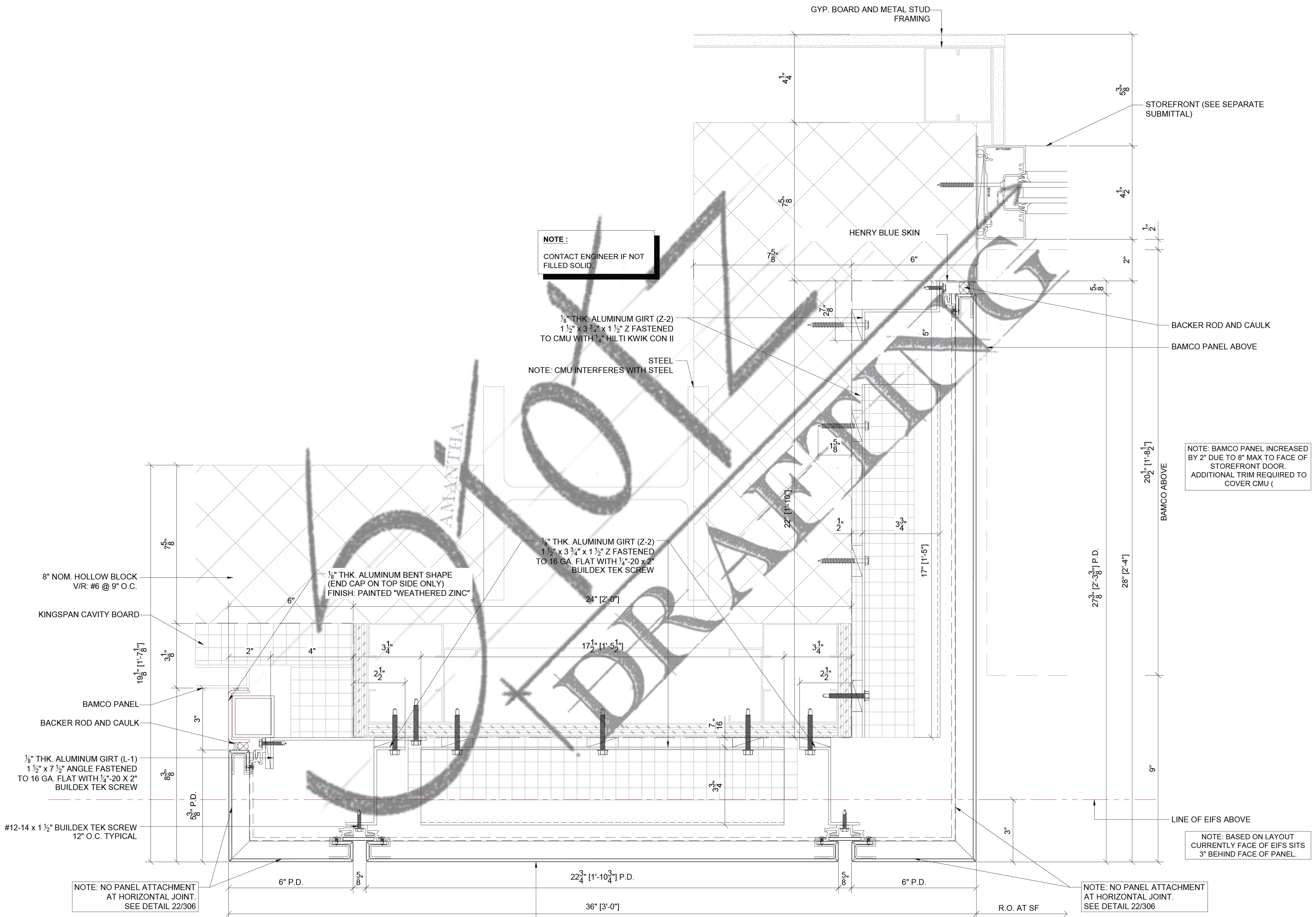
NOTE: NO PANEL ATTACHMENT  
AT HORIZONTAL JOINT.  
SEE DETAIL 22/306

NOTE: NO PANEL ATTACHMENT  
AT HORIZONTAL JOINT.  
SEE DETAIL 22/306

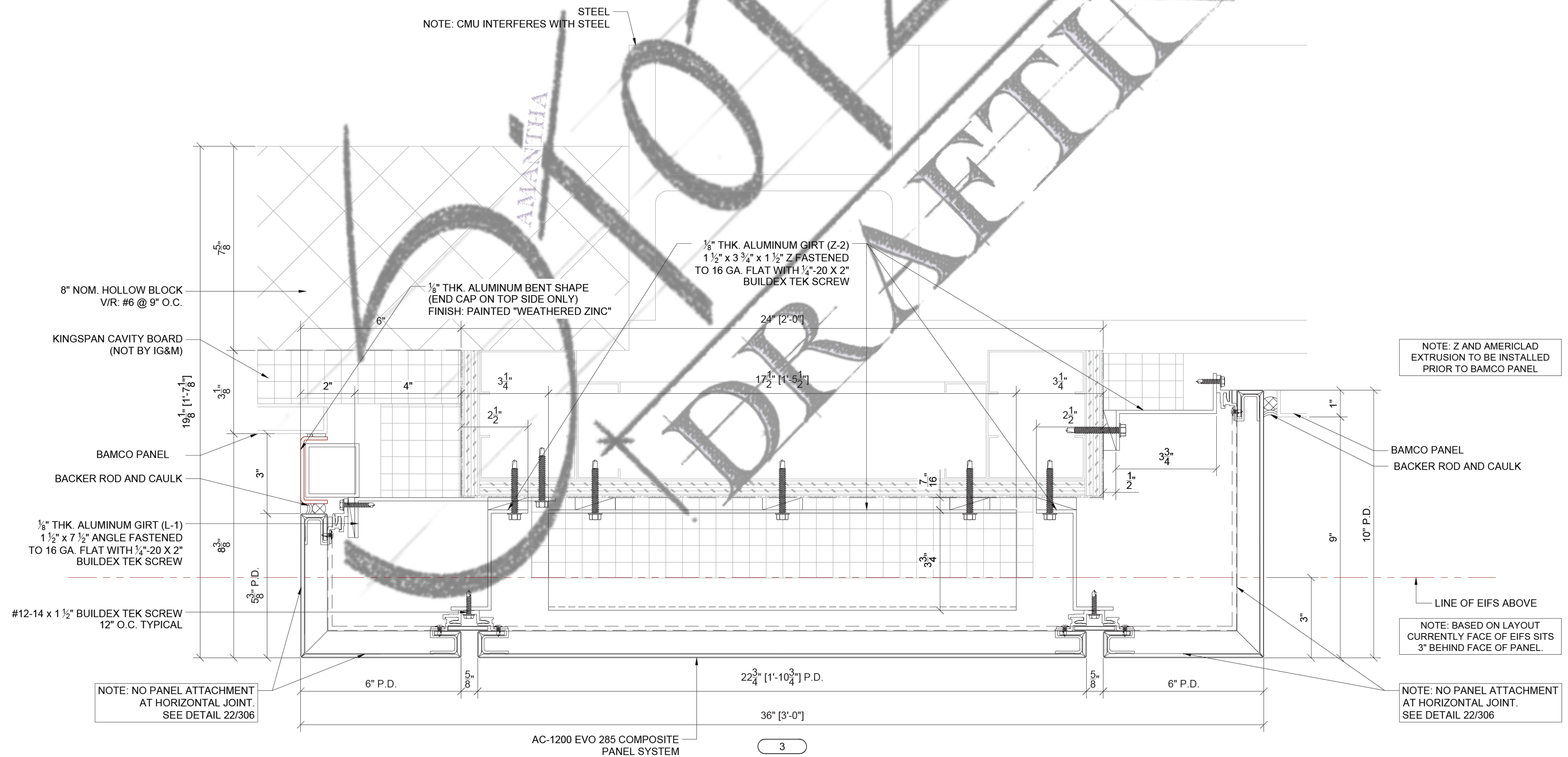
AC-1200 EVO 285 COMPOSITE  
PANEL SYSTEM

1

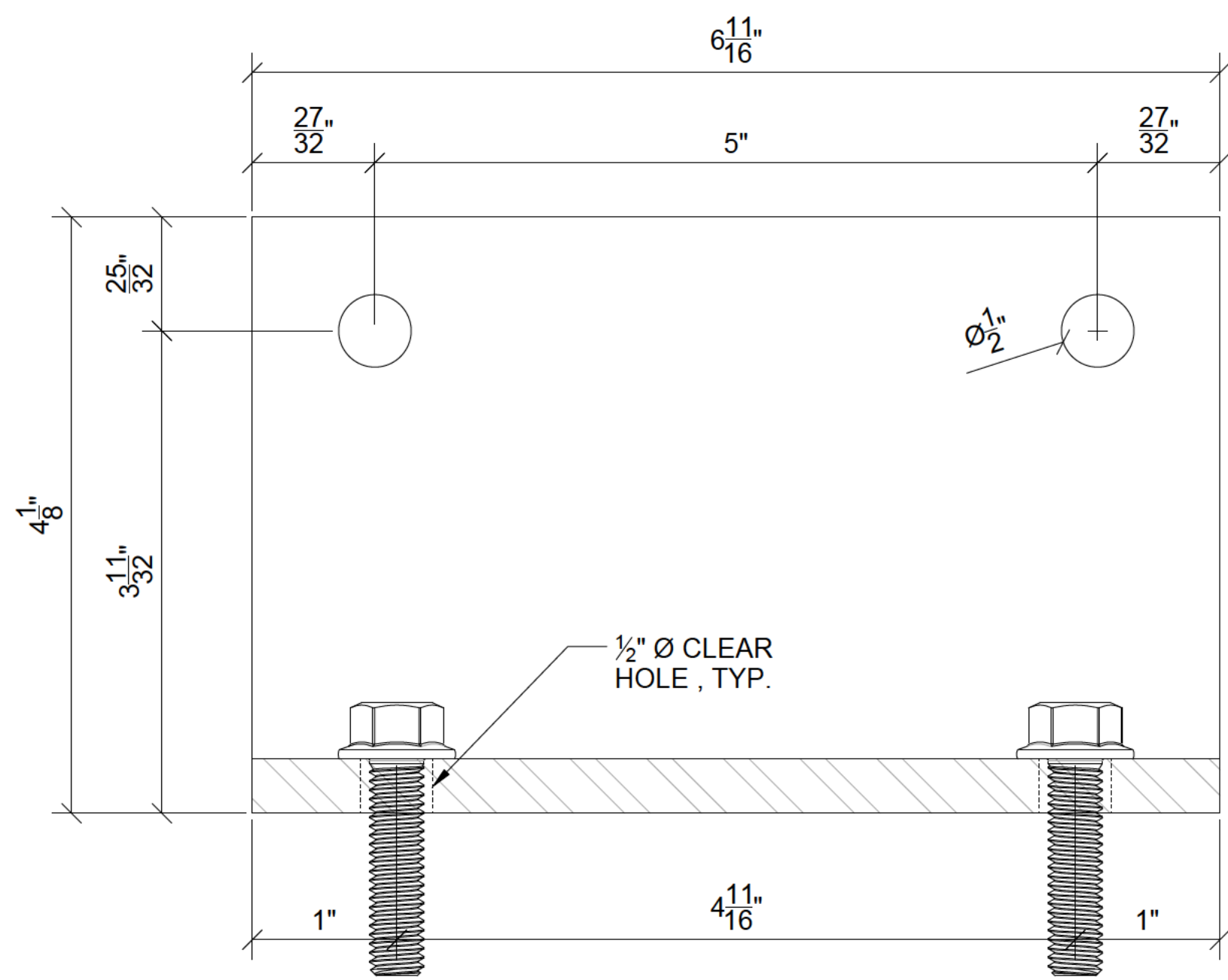
TITLE:	PLAN DETAILS
SCALE:	6" = 1'-0"
SHEET #:	400



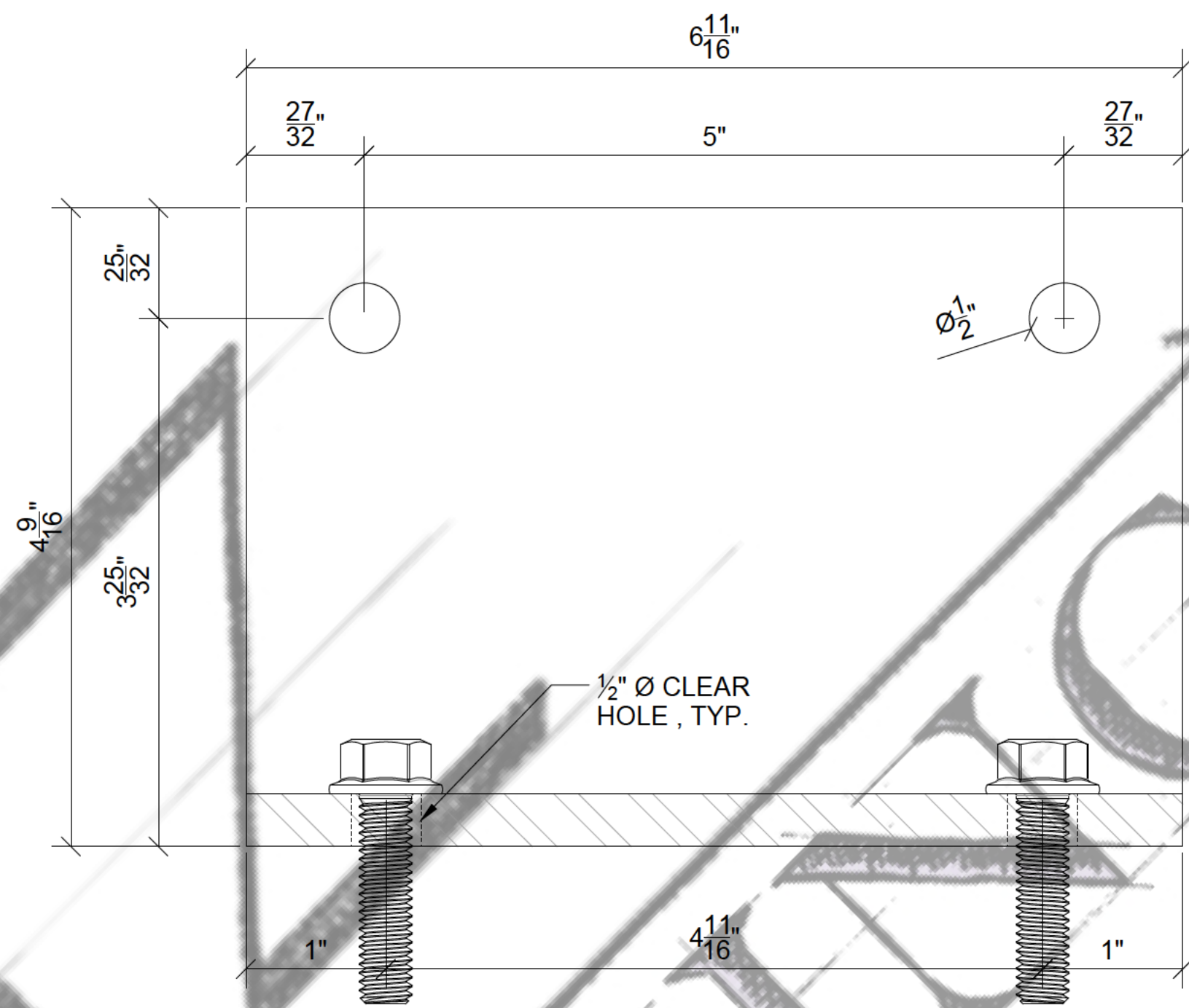
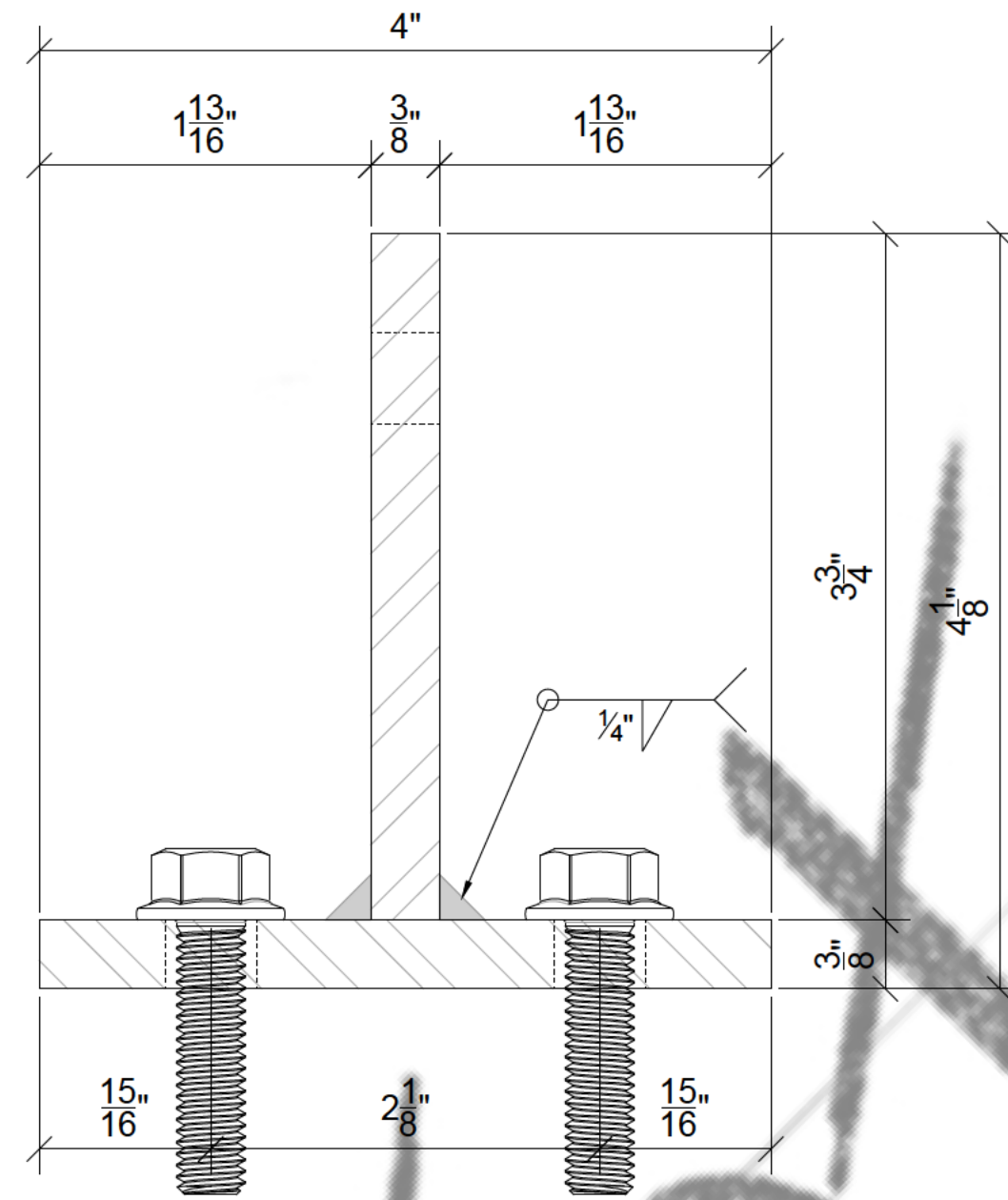
# SAMPLE DRAWINGS



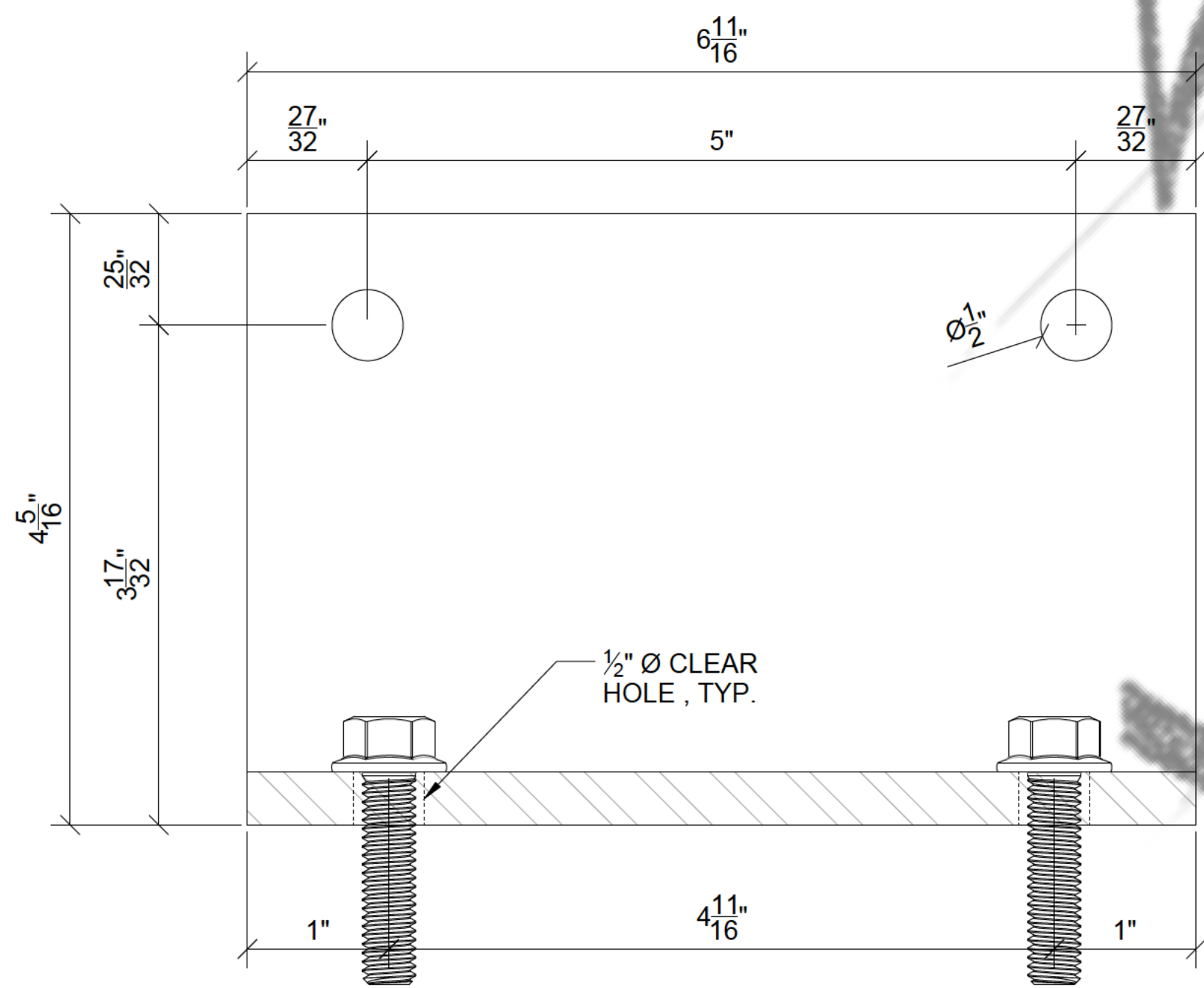
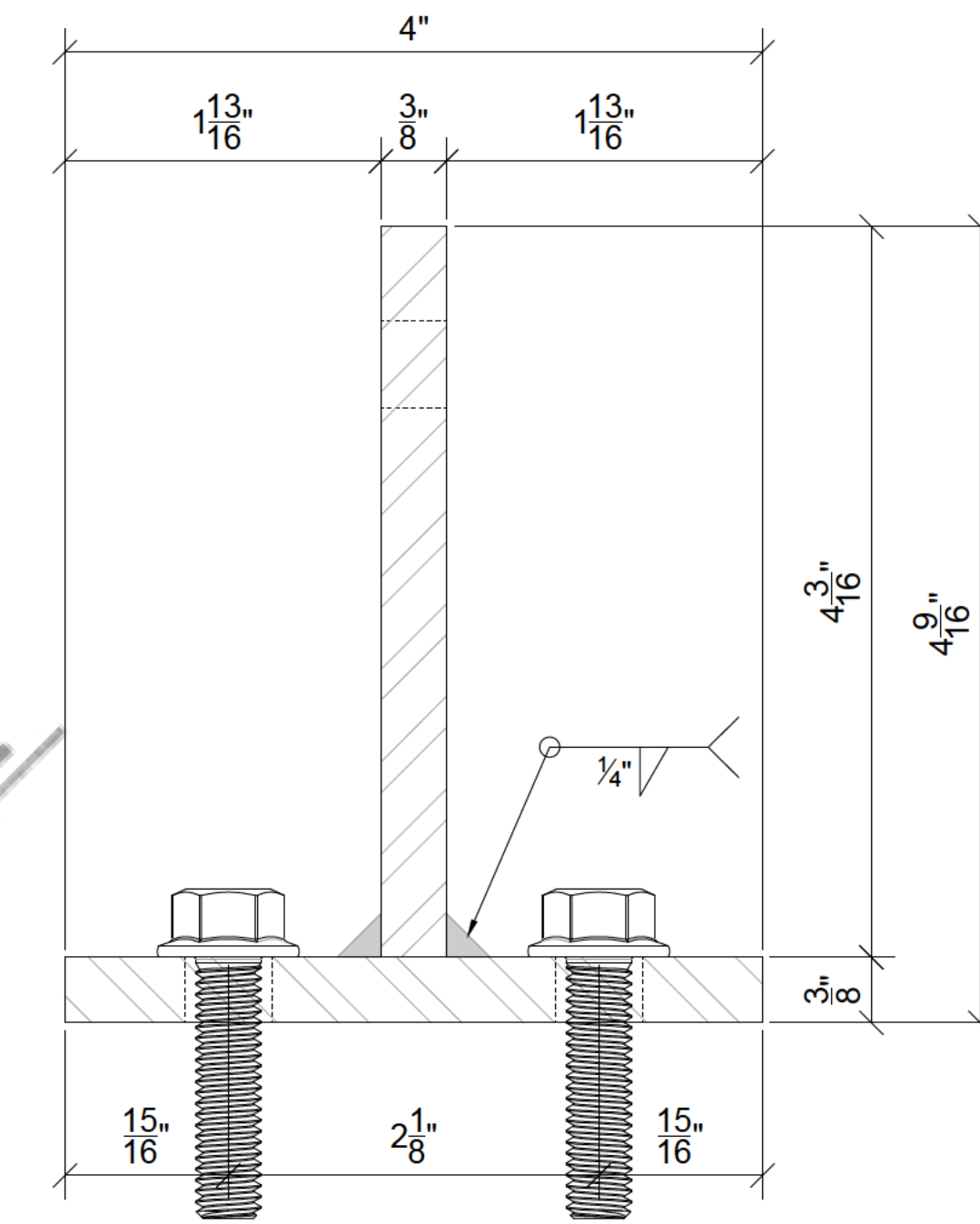
TITLE:	PLAN DETAILS
SCALE:	6" = 1'-0"
SHEET #:	402



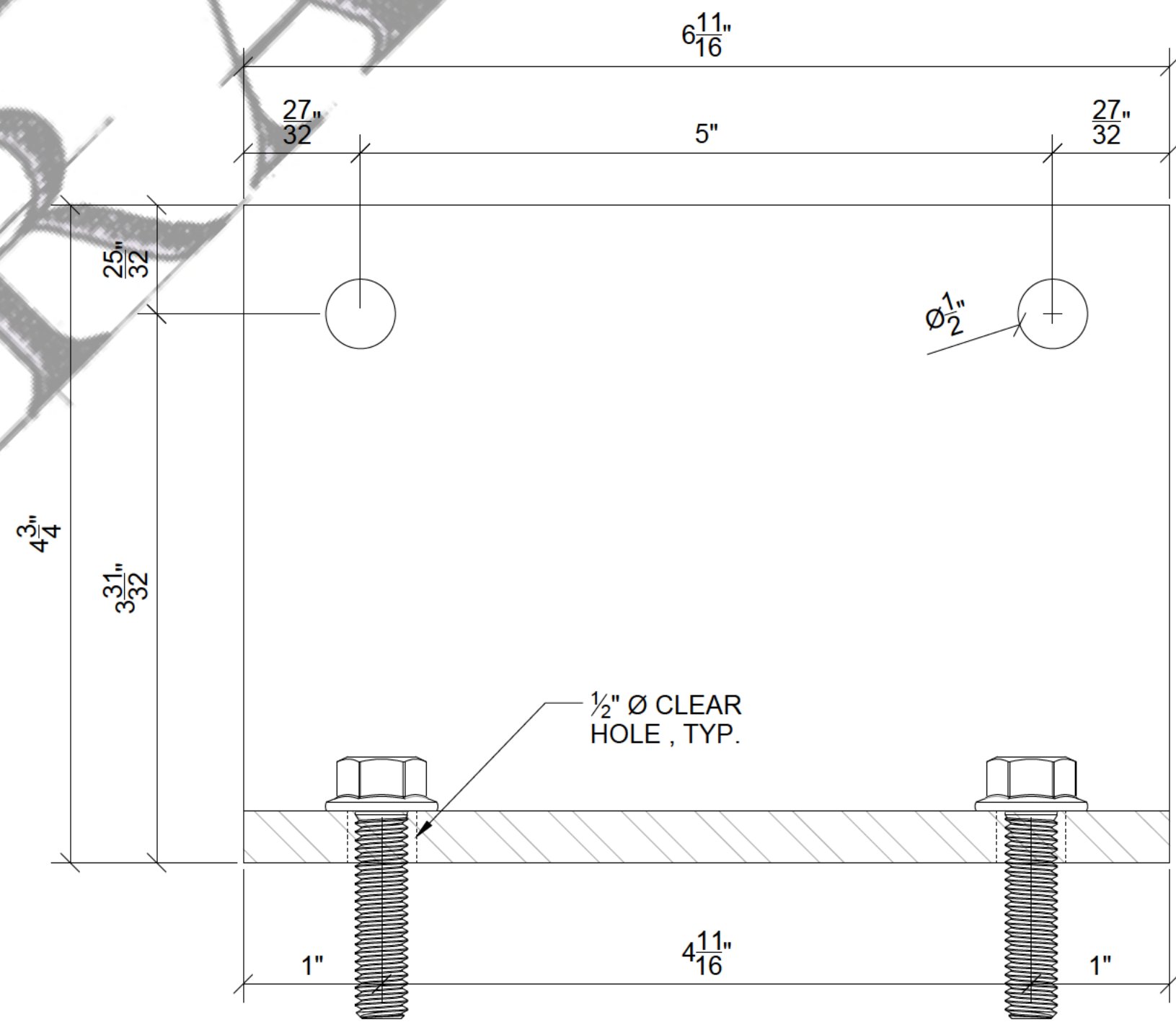
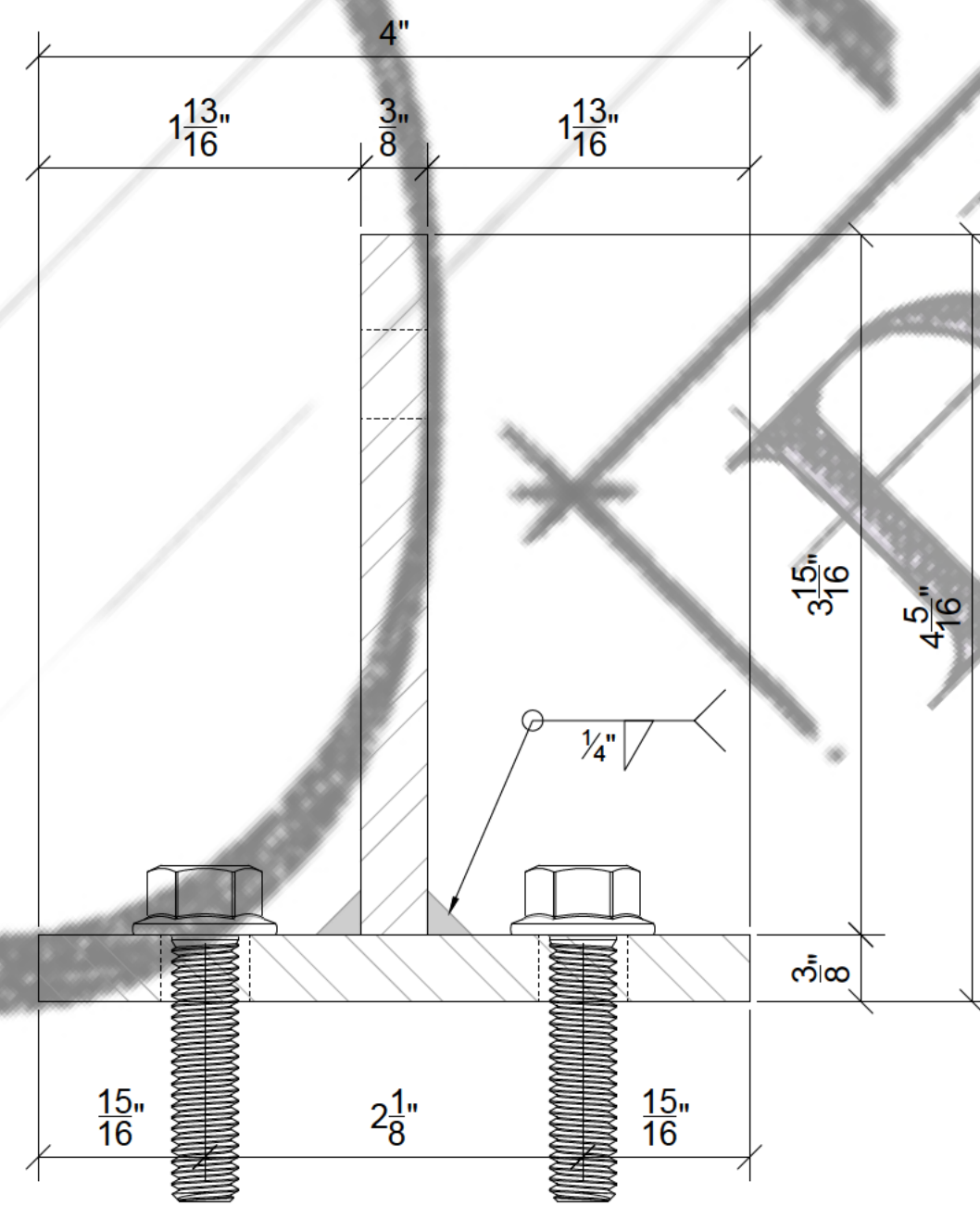
PATHMARK: FIN-1  
 MATERIAL: 3/8" THK. HOT DIPPED GALVANIZED  
 QTY: 20



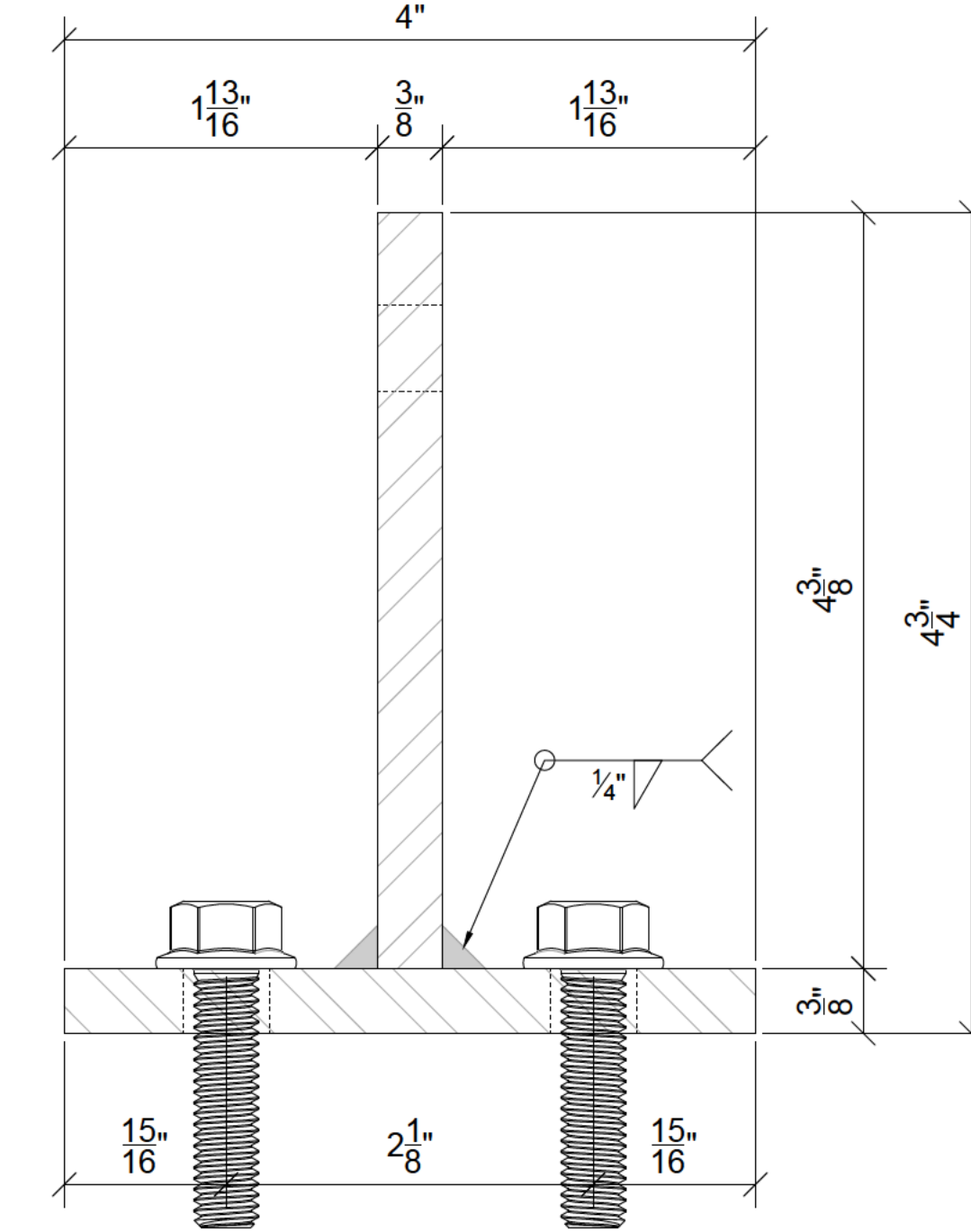
PATHMARK: FIN-3  
 MATERIAL: 3/8" THK. HOT DIPPED GALVANIZED  
 QTY: 5



PATHMARK: FIN-2  
 MATERIAL: 3/8" THK. HOT DIPPED GALVANIZED  
 QTY: 14

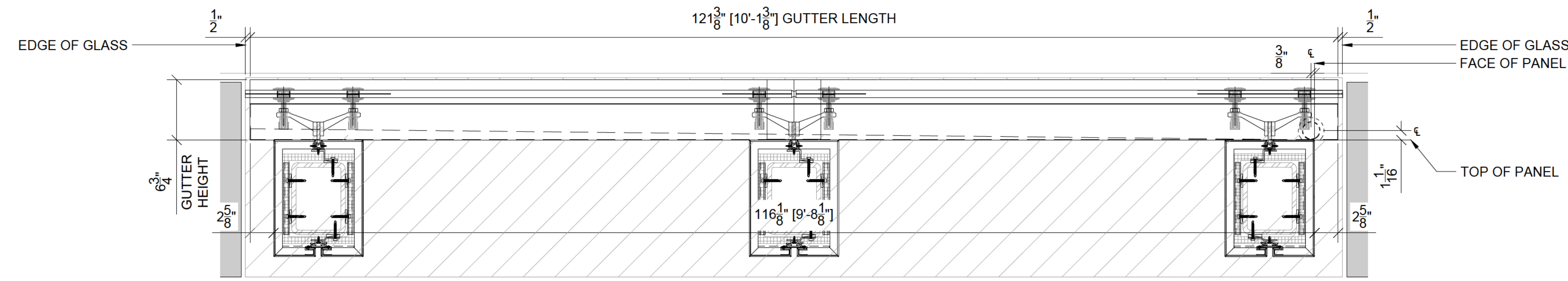


PATHMARK: FIN-4  
 MATERIAL: 3/8" THK. HOT DIPPED GALVANIZED  
 QTY: 1

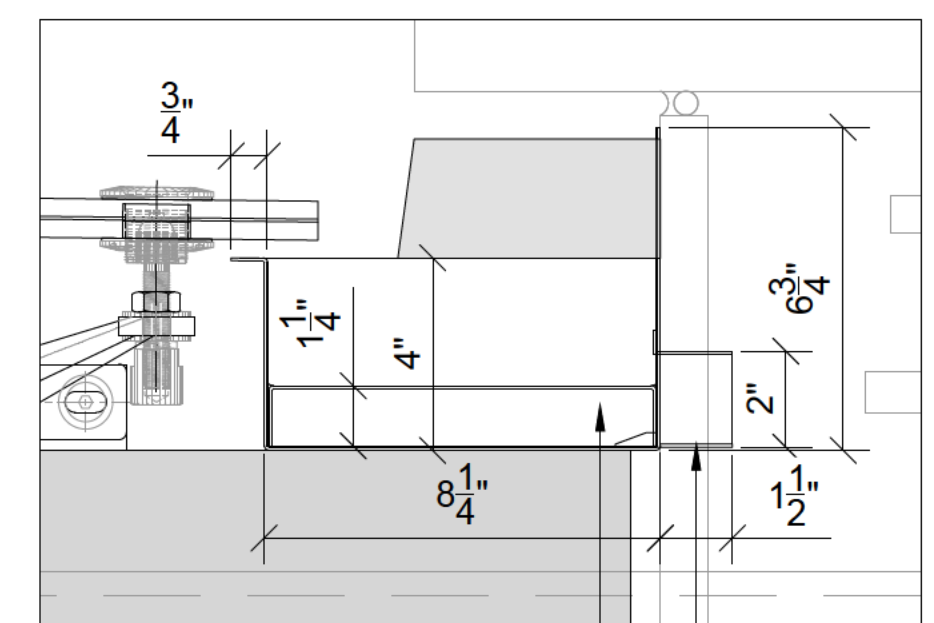


# SAMPLE DRAWINGS

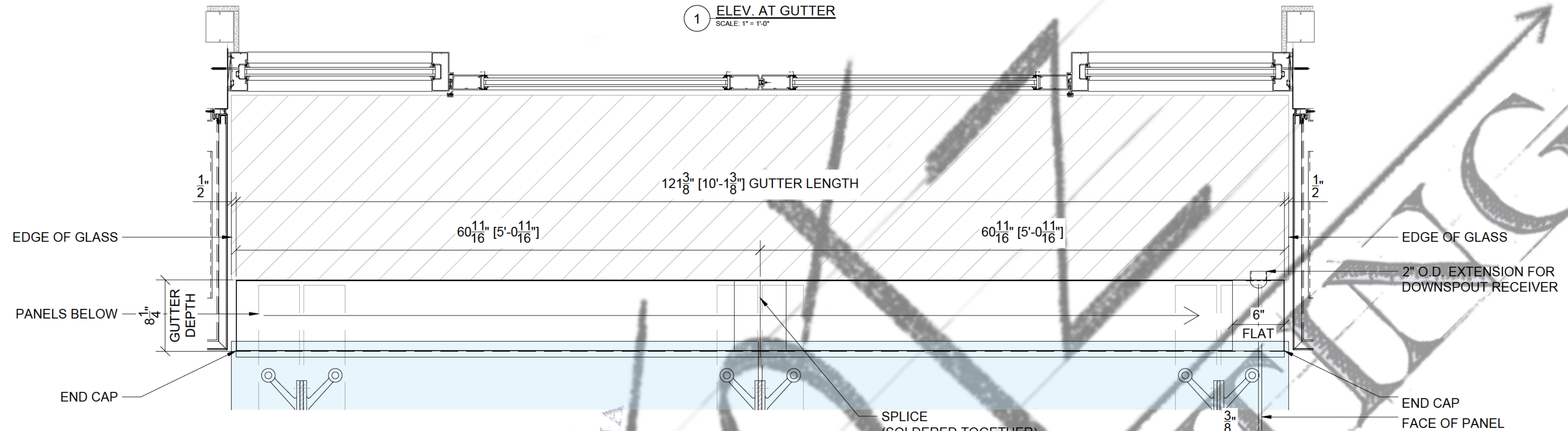
TITLE:	FIN DETAILS
SCALE:	6" = 1'-0"
SHEET #:	501



1 ELEV. AT GUTTER  
SCALE: 1" = 1'-0"



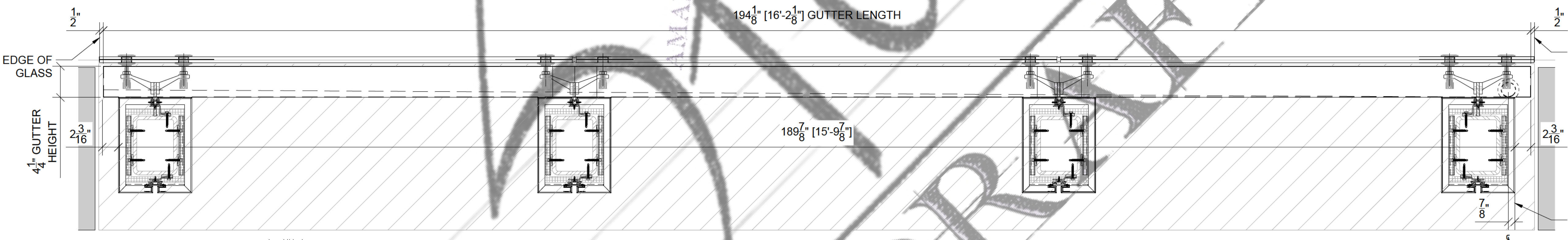
ST/ST GUTTER WITH END CAPS, SLOPED INSERT. GUTTER TO BE SET IN STRUCTURAL SEALANT  
DOWNSPOUT RECEIVER



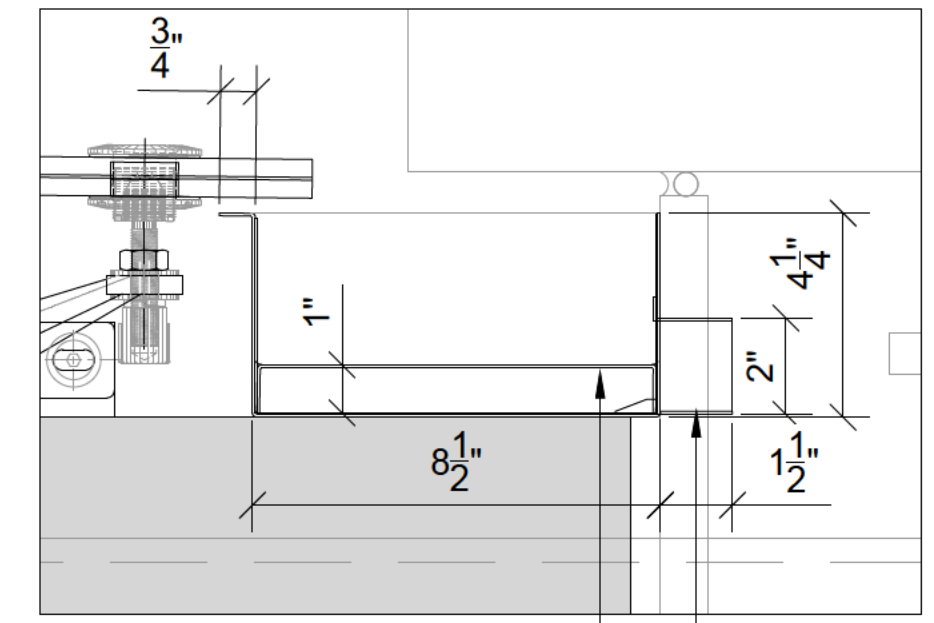
2 PLAN AT GUTTER  
SCALE: 1" = 1'-0"

NOTE TO MANUFACTURE:  
HOLE FOR DOWNSPOUT RECEIVER TO BE DONE IN THE FIELD. RECEIVER TO BE SHIPPED LOOSE.

NOTE TO MANUFACTURE:  
END CAPS AND INSERTS TO BE SOLDERED IN PLACE



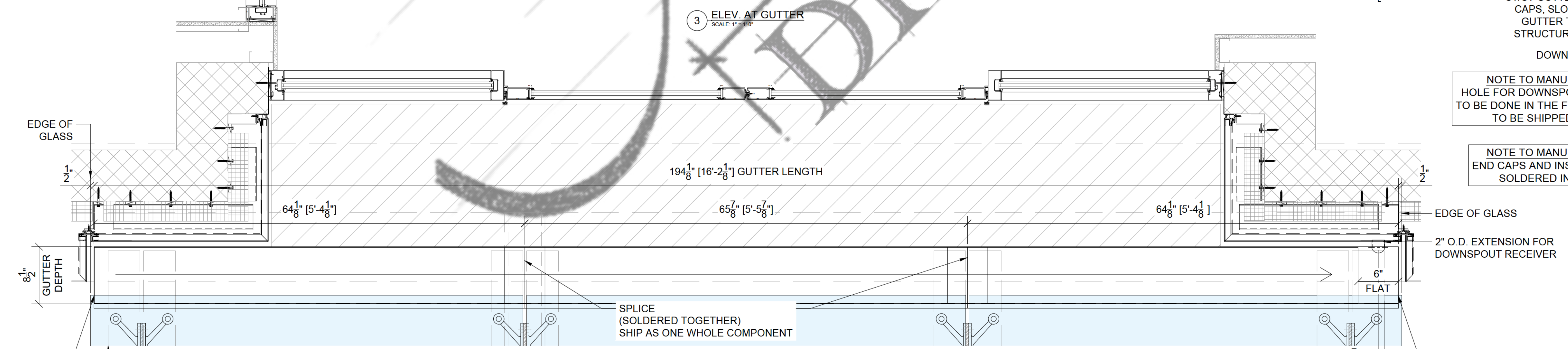
3 ELEV. AT GUTTER  
SCALE: 1" = 1'-0"



ST/ST GUTTER WITH END CAPS, SLOPED INSERT. GUTTER TO BE SET IN STRUCTURAL SEALANT  
DOWNSPOUT RECEIVER

NOTE TO MANUFACTURE:  
HOLE FOR DOWNSPOUT RECEIVER TO BE DONE IN THE FIELD. RECEIVER TO BE SHIPPED LOOSE.

NOTE TO MANUFACTURE:  
END CAPS AND INSERTS TO BE SOLDERED IN PLACE



4 PLAN AT GUTTER  
SCALE: 1" = 1'-0"

TITLE:	GUTTER LAYOUT AND DETAILS
SCALE:	3/4" = 1'-0"
SHEET #:	600

SAMPLE DRAWINGS