

GLASS SCHEDULE				
MARK	TYPE	QTY	WIDTH	HEIGHT
DR-1	GL-01	16	19"	70 1/8"
DR-2	GL-01	8	38 13/16"	19 1/8"

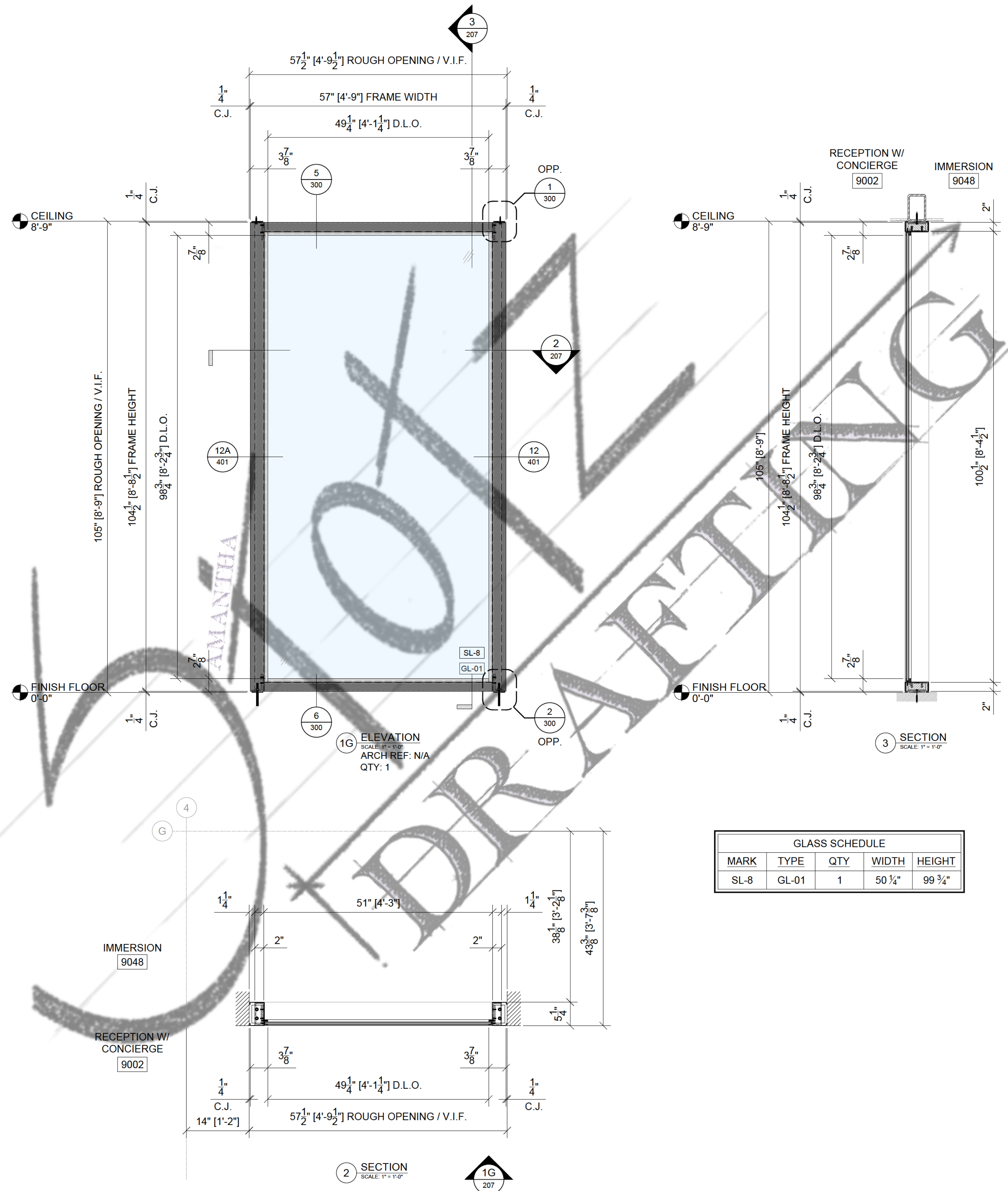
DOOR #:		9049A, 9049B, 9052A, 9052B		
HARDWARE SET:		CUSTOM		
LOCATION:		(MAINSTREET) CIRCULATION - 9047		
DOOR OPENING:		7'-6 1/2" x 8'-6 5/8"		
QUANTITY:		(4) PAIRS		
FINISH:		BLACK POWDER COAT		
PAIR OUTSWING				
QTY.	HARDWARE ITEM	MODEL NUMBER	MANUFACTURER	FINISH
8	CONCEALED OVERHEAD CLOSER	2032	len	-
8	CONTINUOUS GEAR HINGE	780-110-HD-119	HAGER	-
4 SETS	LADDER PULLS	72"	-	-
-	GASKET	S771	PEMKO	-
-	GASKET	AM88	PEMKO	-

TITLE:
ELEVATION AND SECTIONS

SCALE: 1" = 1'-0"

SHEET #: 201

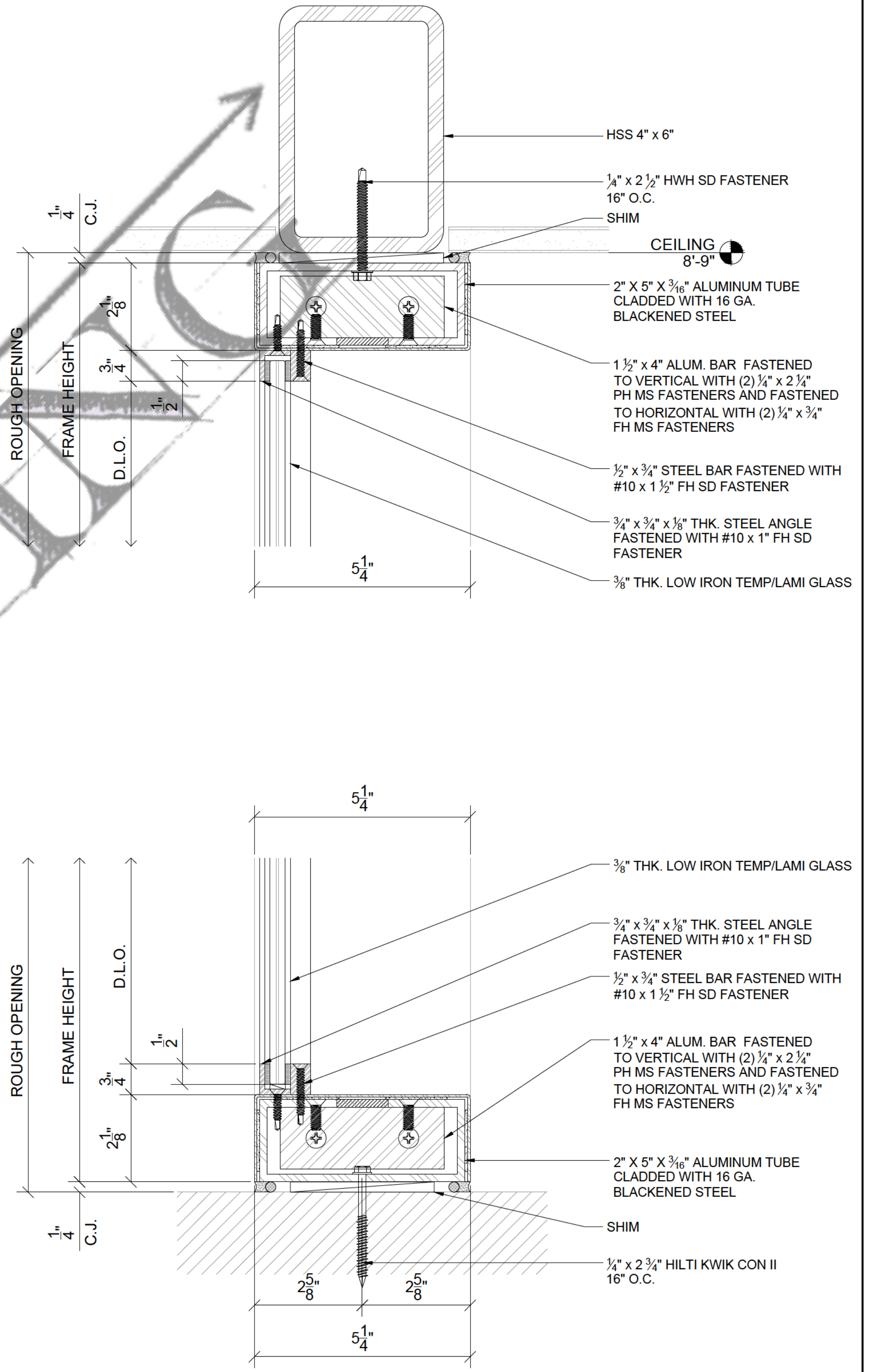
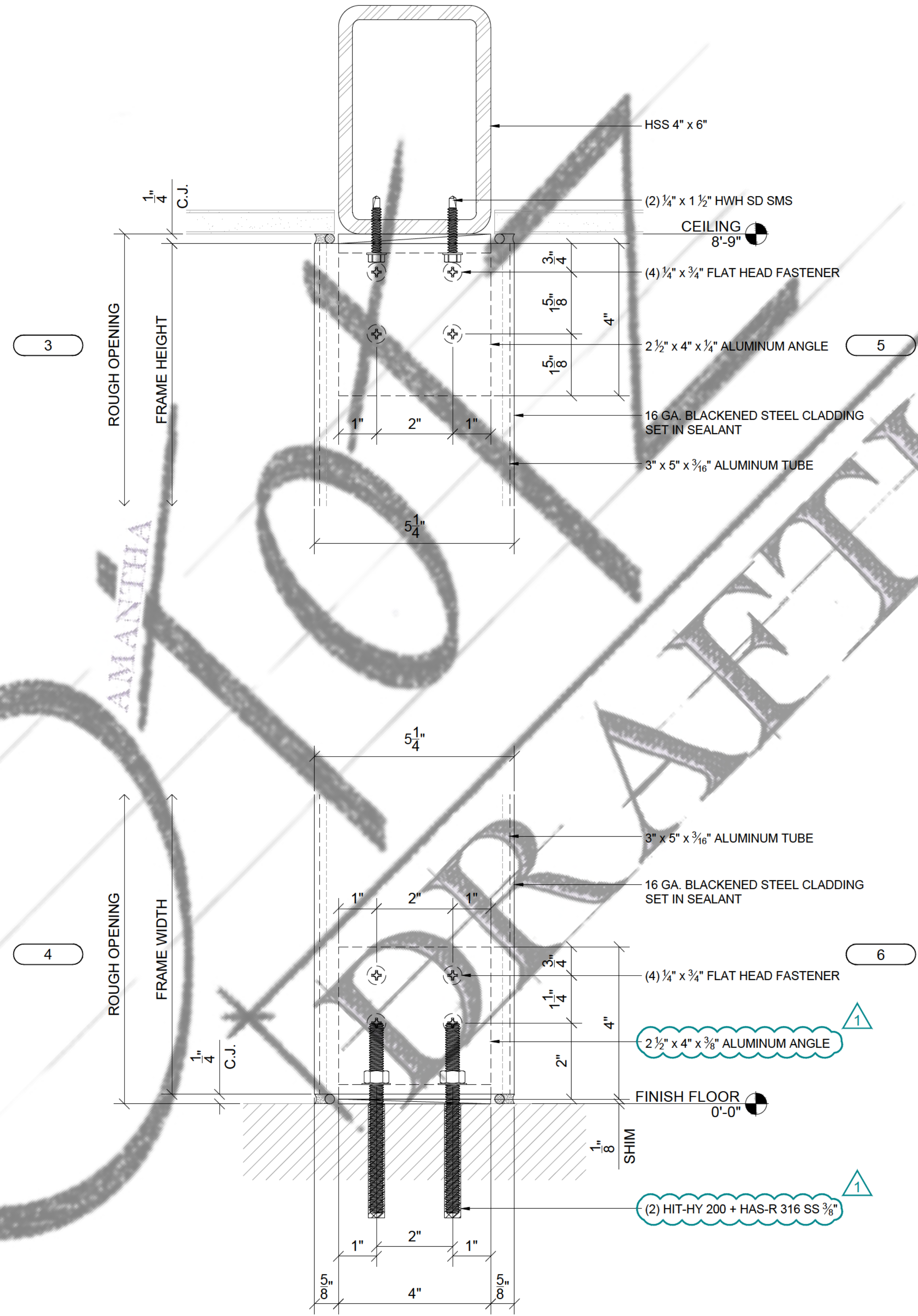
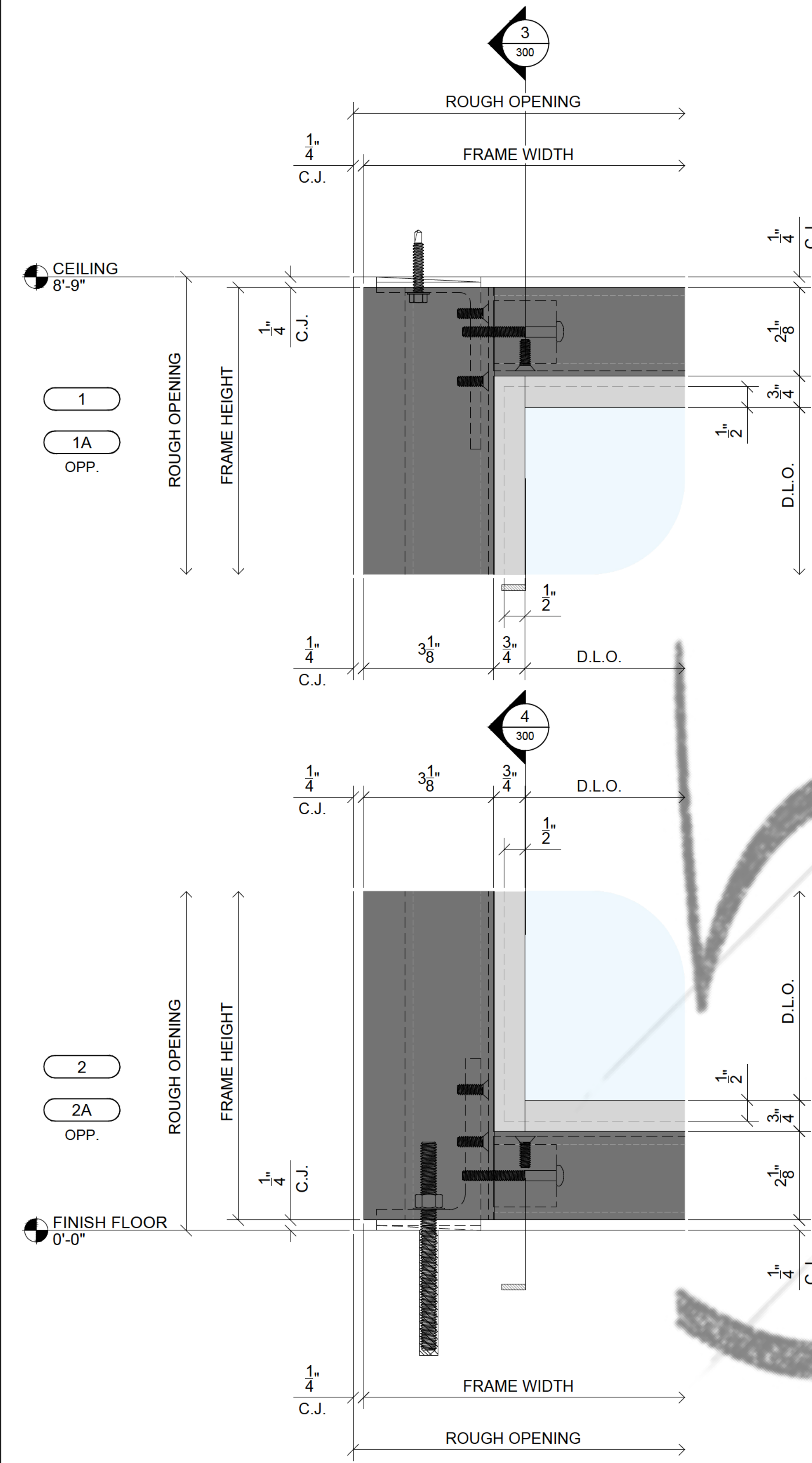
SAMPLE DRAWINGS



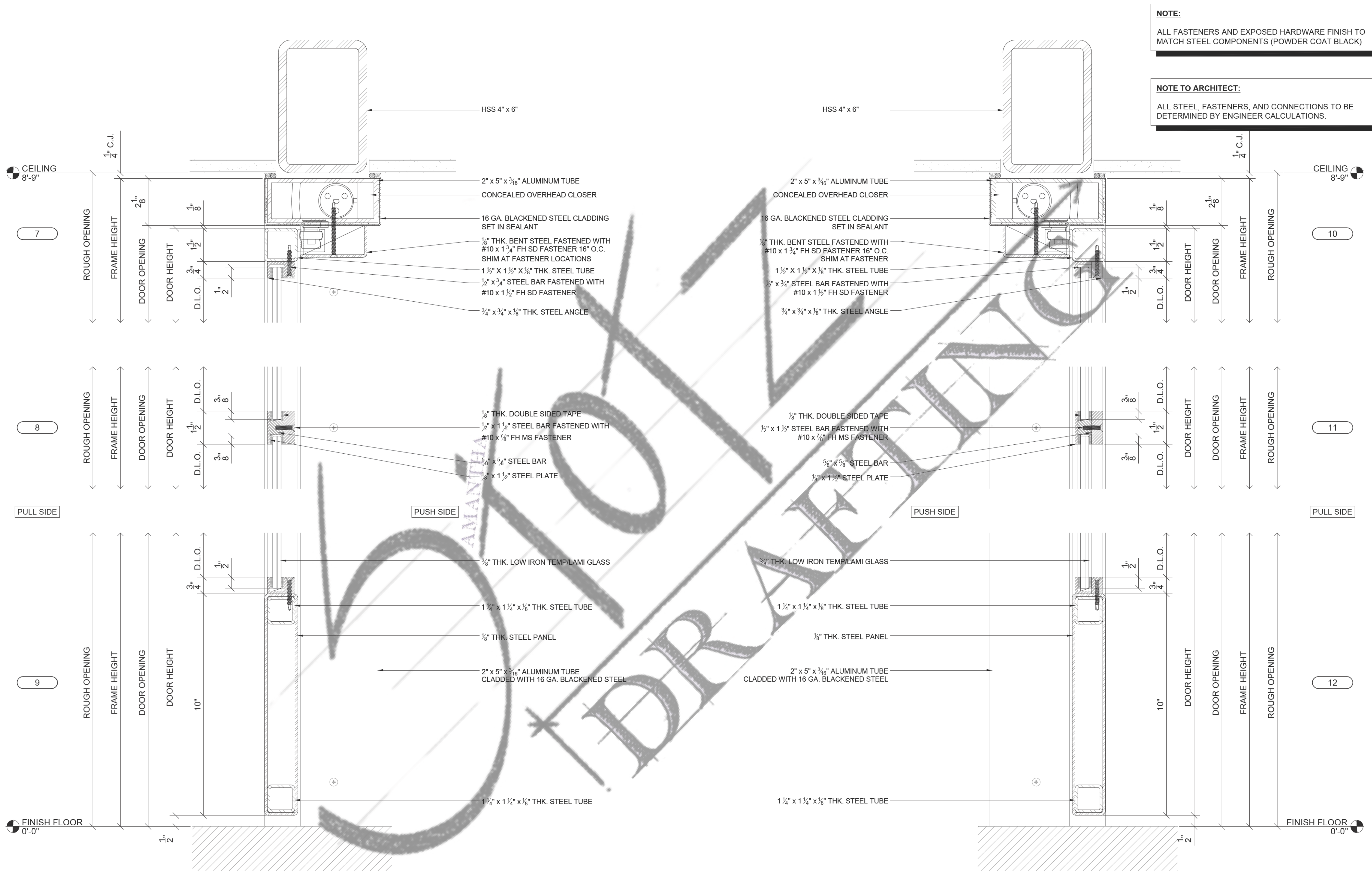
SAMPLE DRAWINGS

NOTE:
ALL FASTENERS AND EXPOSED HARDWARE FINISH TO MATCH STEEL COMPONENTS (POWDER COAT BLACK)

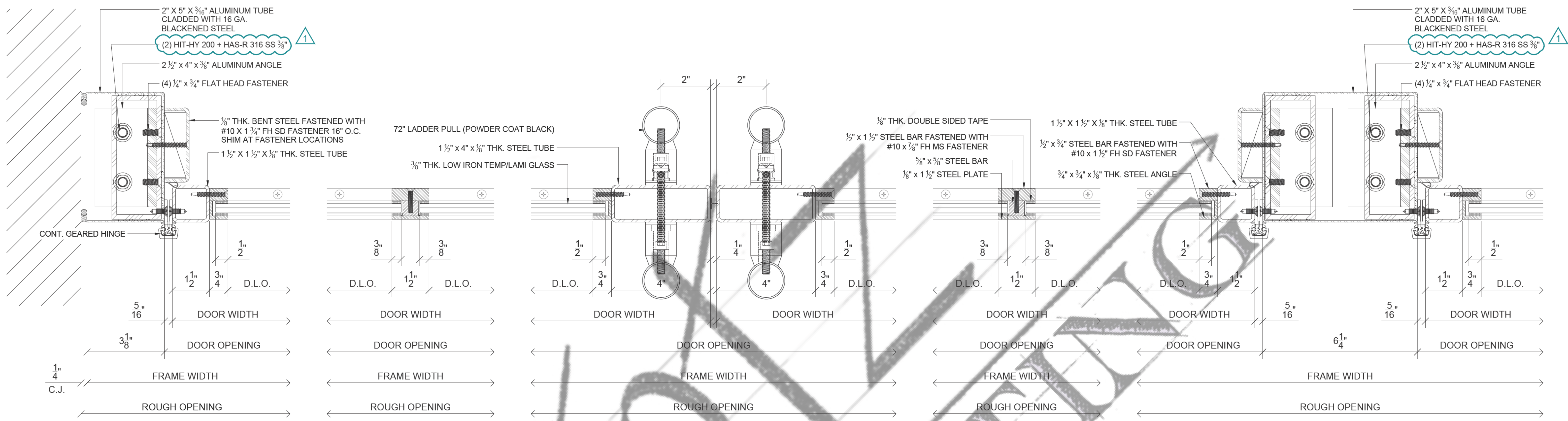
NOTE TO ARCHITECT:
ALL STEEL, FASTENERS, AND CONNECTIONS TO BE DETERMINED BY ENGINEER CALCULATIONS.



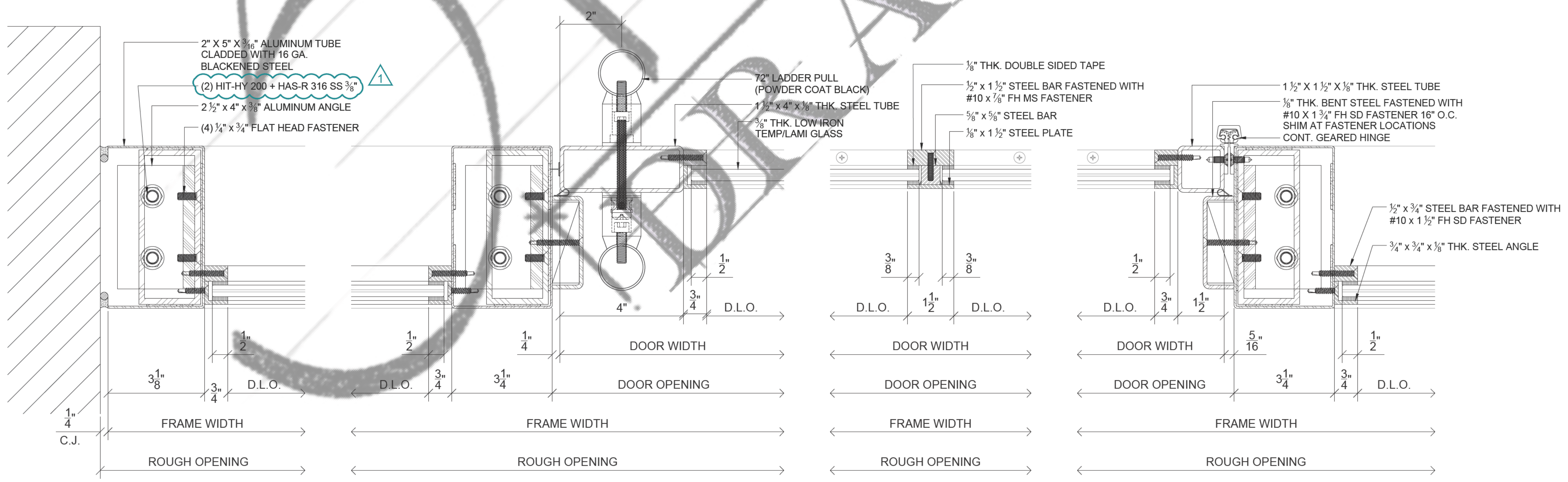
SAMPLE DRAWINGS



SAMPLE DRAWINGS



1
1A
OPP.



SAMPLE DRAWINGS