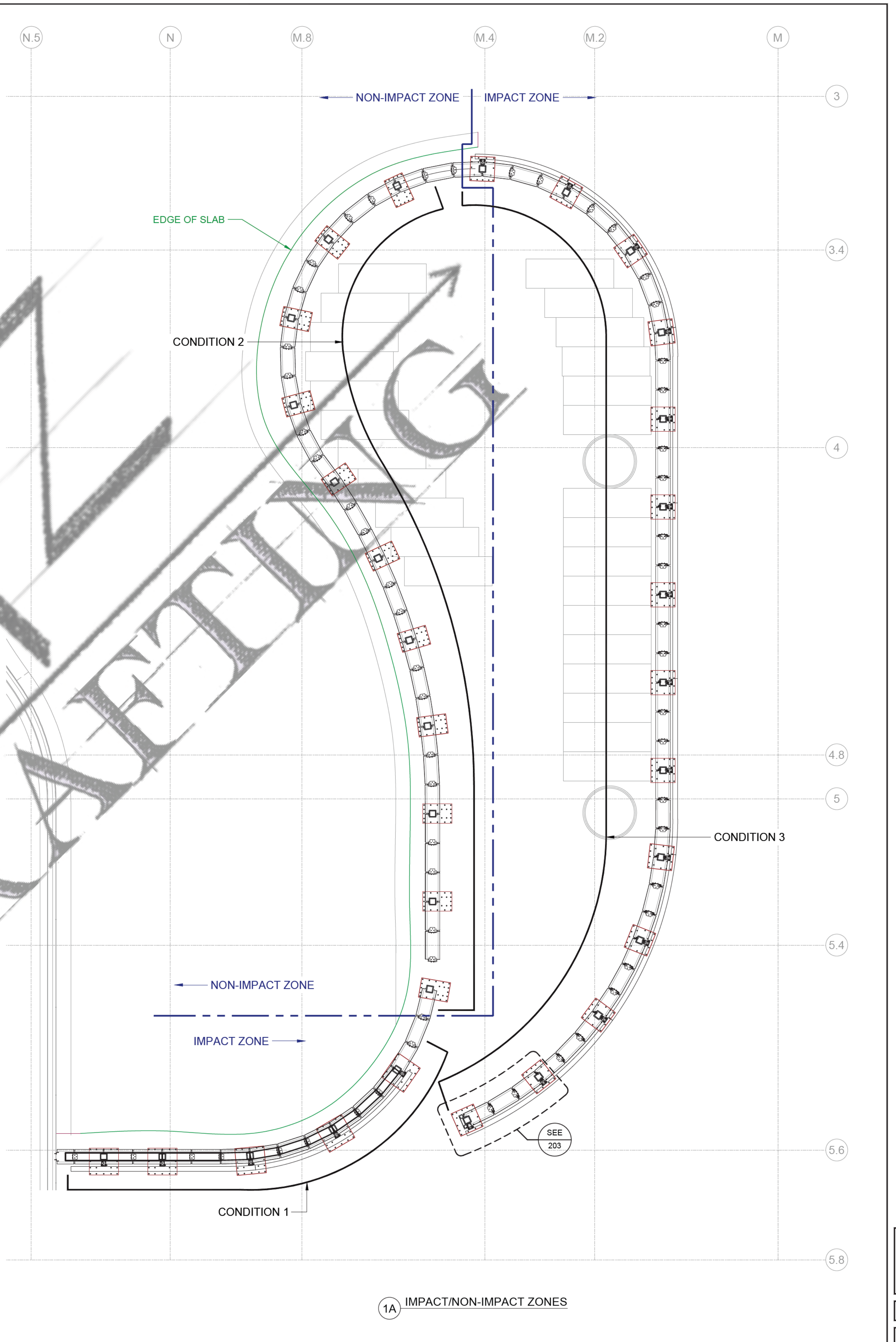


1 GROUND FLOOR PLAN

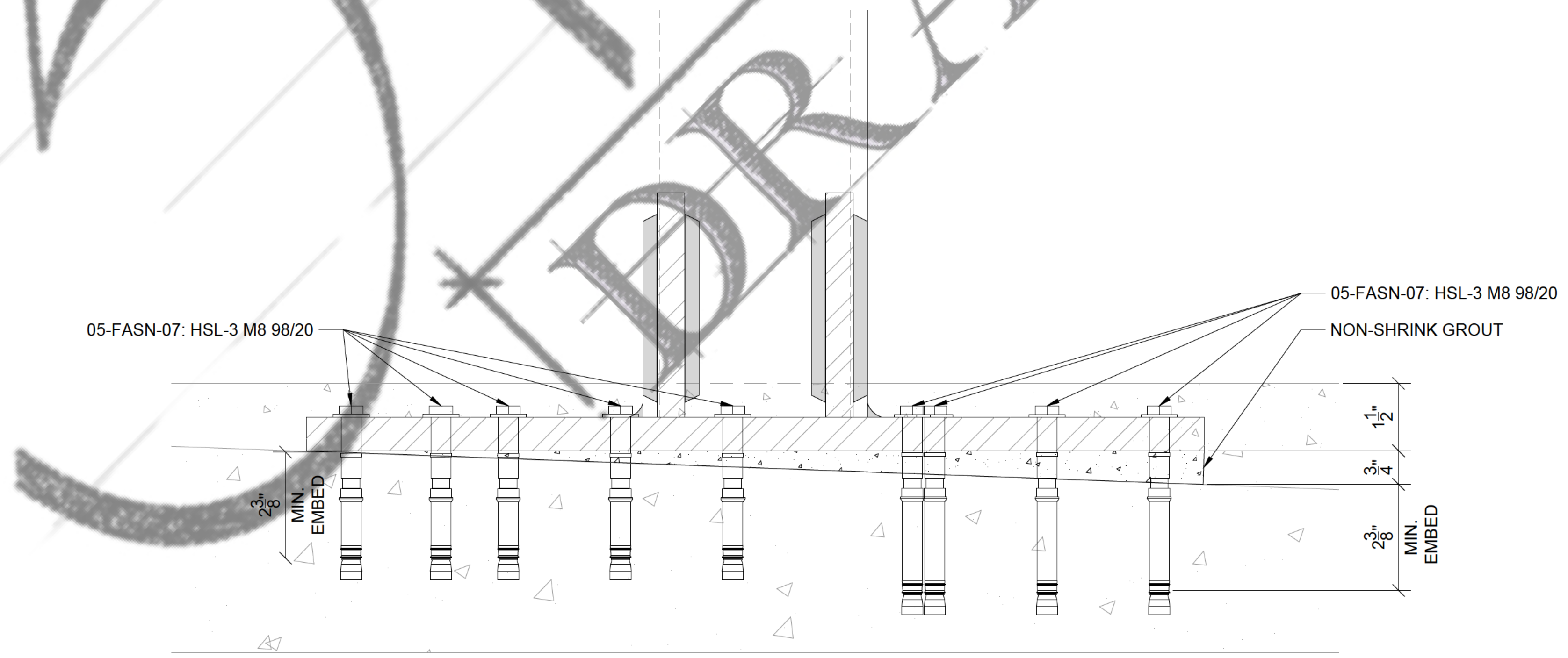
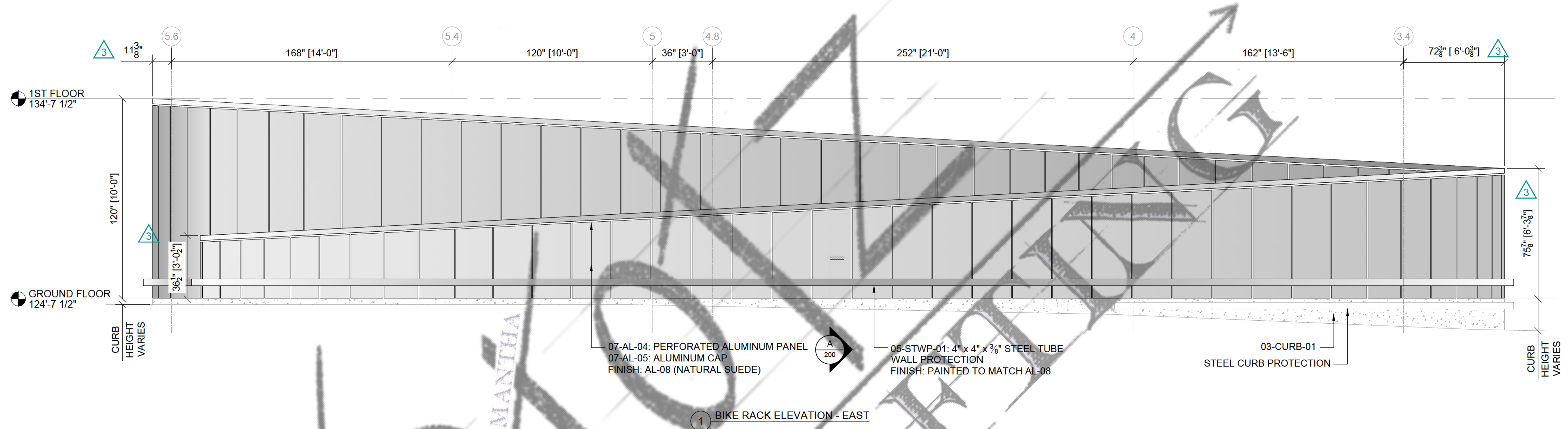


1A IMPACT/NON-IMPACT ZONES

TITLE:	GROUND FLOOR PLAN
SCALE:	1/4" = 1'-0"
SHEET #:	100

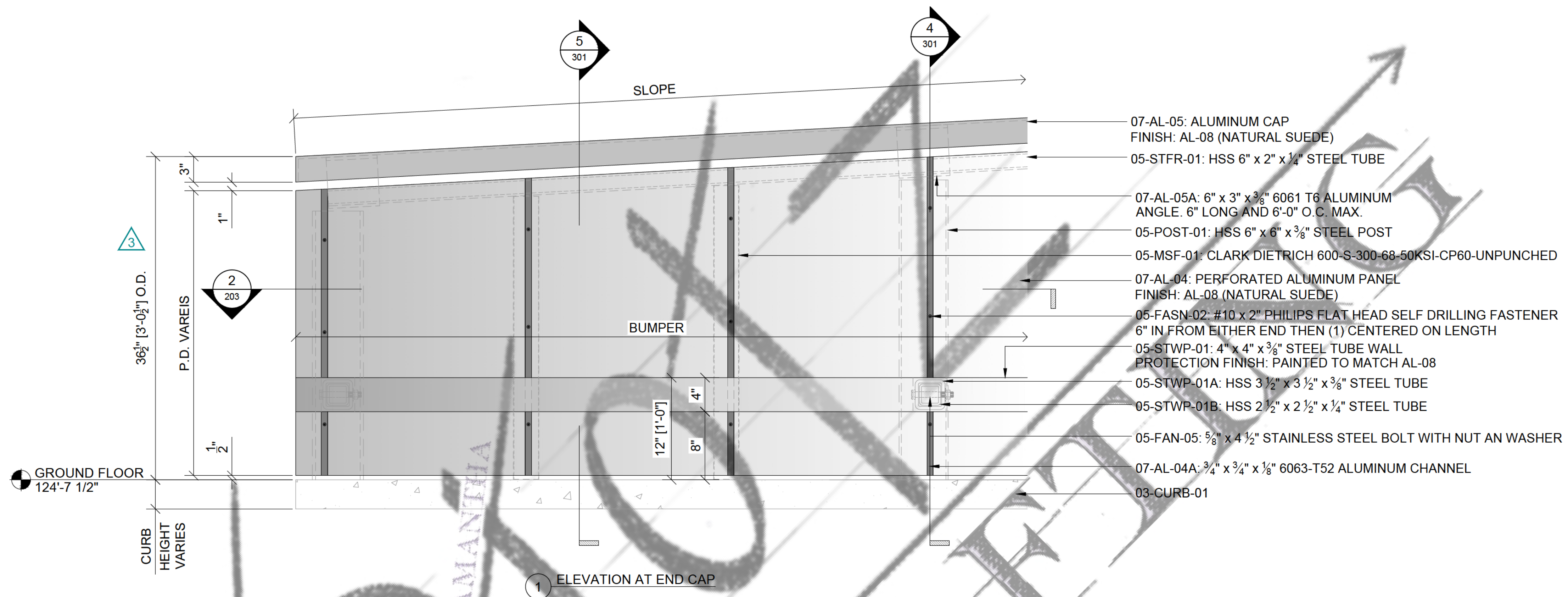
SAMPLE DRAWINGS

SAMPLE DRAWINGS

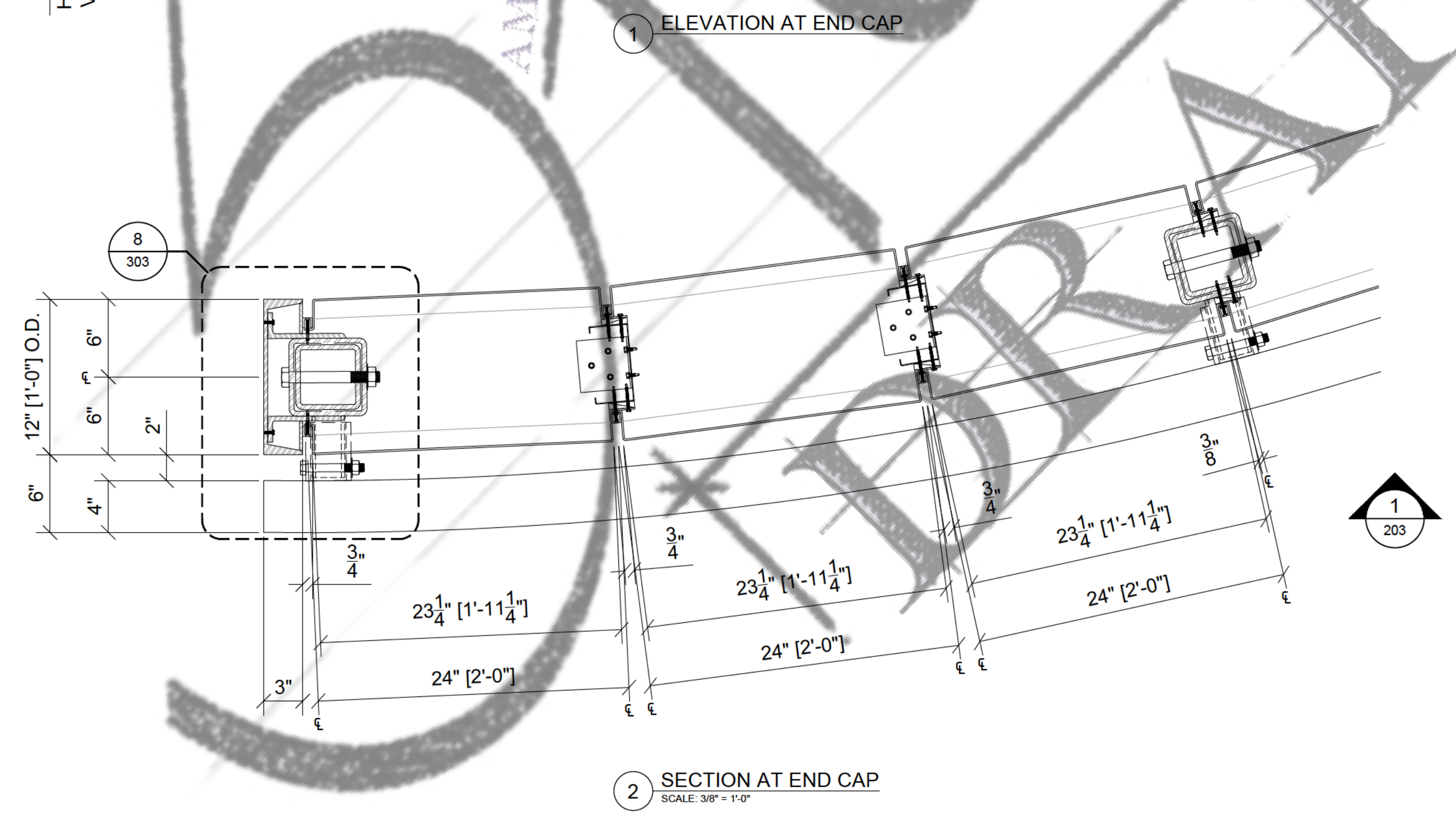


A PLATE AT SLOPED SLAB
SCALE: 6" = 1'-0"

TITLE:	ELEVATION
SCALE:	3/8" = 1'-0"
SHEET #:	200

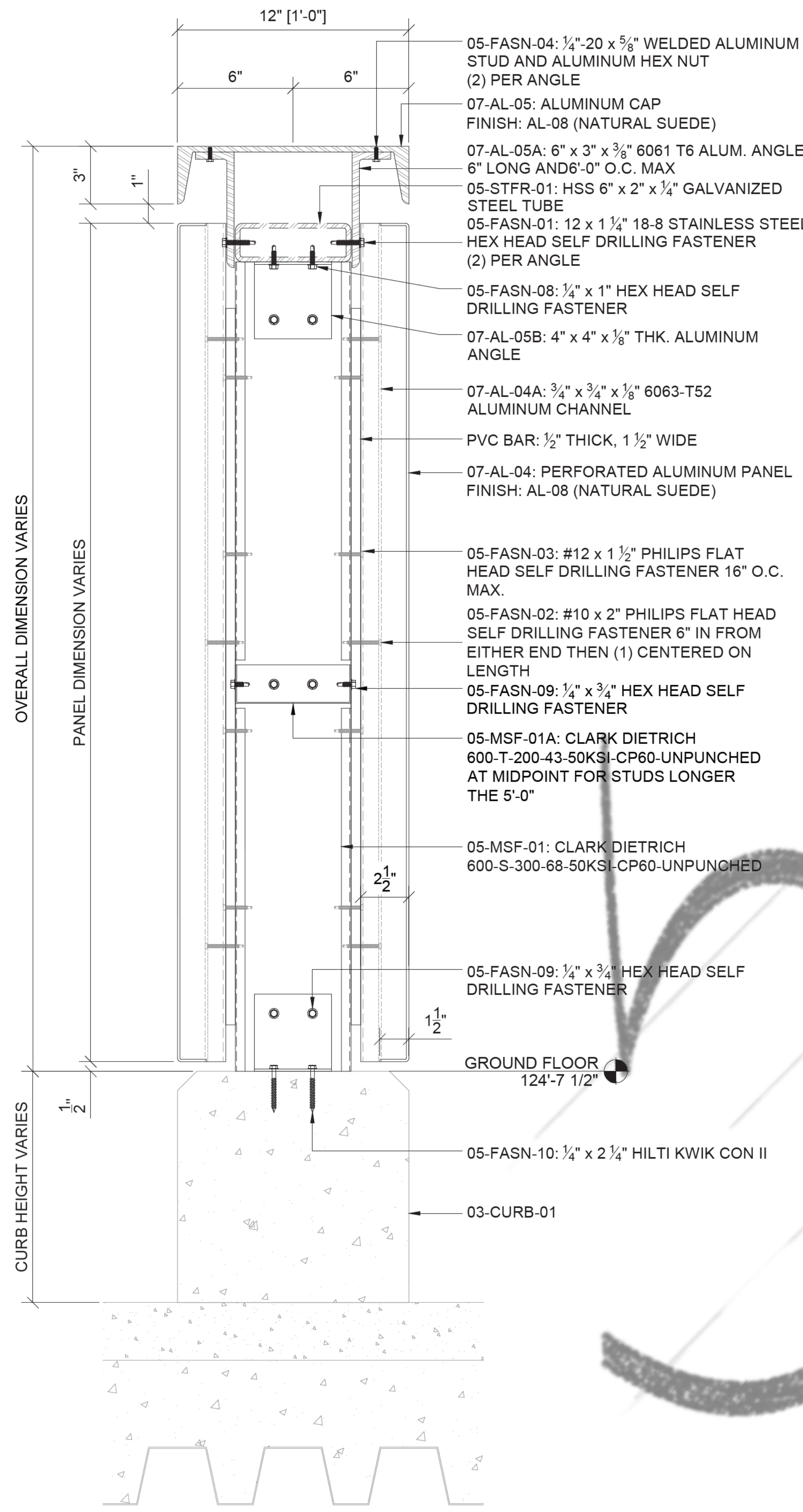


- 07-AL-05: ALUMINUM CAP
FINISH: AL-08 (NATURAL SUEDE)
- 05-STFR-01: HSS 6" x 2" x 1/4" STEEL TUBE
- 07-AL-05A: 6" x 3" x 3/8" 6061 T6 ALUMINUM
ANGLE. 6" LONG AND 6'-0" O.C. MAX.
- 05-POST-01: HSS 6" x 6" x 3/8" STEEL POST
- 05-MSF-01: CLARK DIETRICH 600-S-300-68-50KSI-CP60-UNPUNCHED
- 07-AL-04: PERFORATED ALUMINUM PANEL
FINISH: AL-08 (NATURAL SUEDE)
- 05-FASN-02: #10 x 2" PHILIPS FLAT HEAD SELF DRILLING FASTENER
6" IN FROM EITHER END THEN (1) CENTERED ON LENGTH
- 05-STWP-01: 4" x 4" x 3/8" STEEL TUBE WALL
PROTECTION FINISH: PAINTED TO MATCH AL-08
- 05-STWP-01A: HSS 3 1/2" x 3 1/2" x 3/8" STEEL TUBE
- 05-STWP-01B: HSS 2 1/2" x 2 1/2" x 1/4" STEEL TUBE
- 05-FAN-05: 5/8" x 4 1/2" STAINLESS STEEL BOLT WITH NUT AN WASHER
- 07-AL-04A: 3/4" x 3/4" x 1/8" 6063-T52 ALUMINUM CHANNEL
- 03-CURB-01

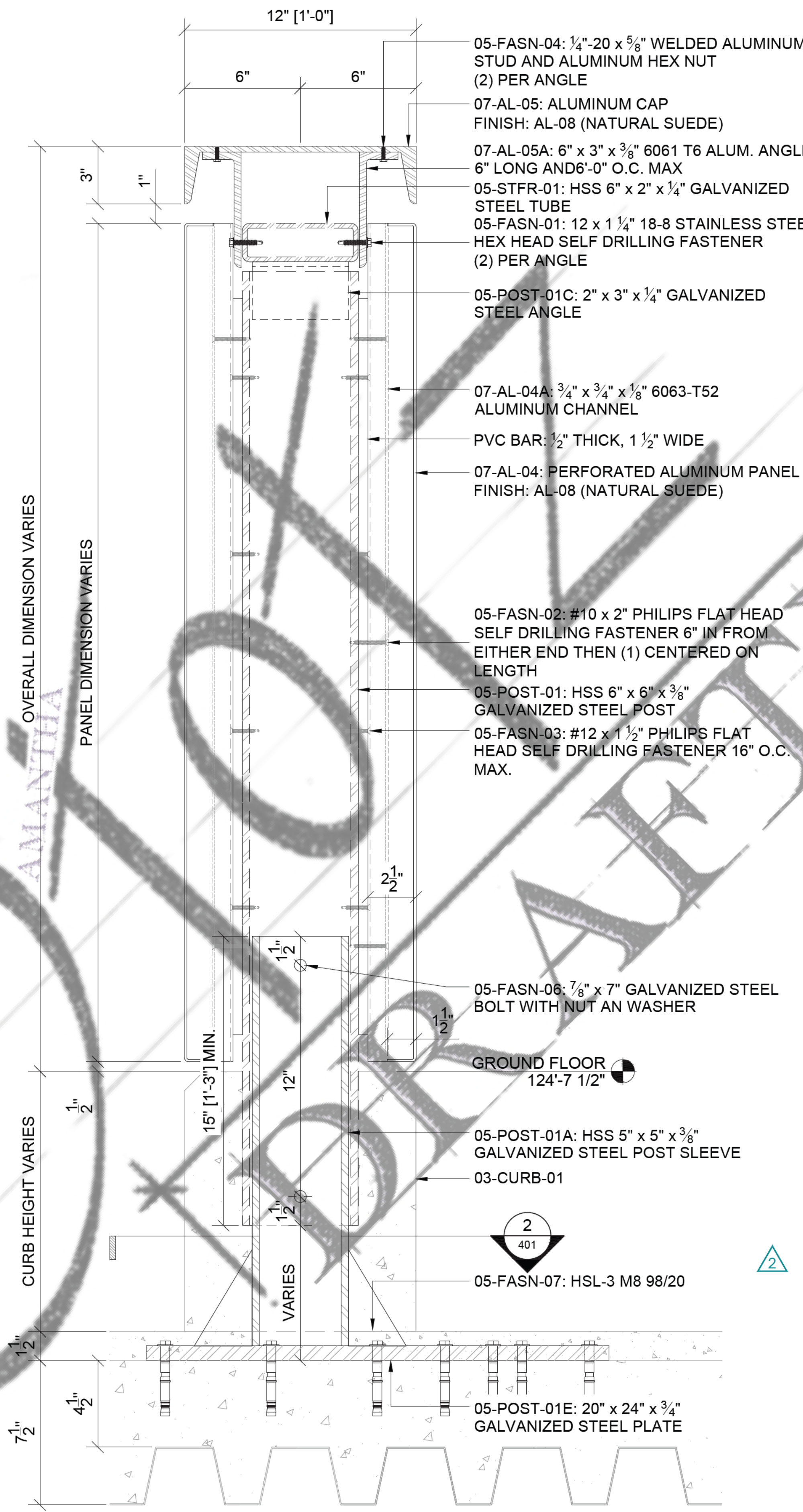


SAMPLE DRAWINGS

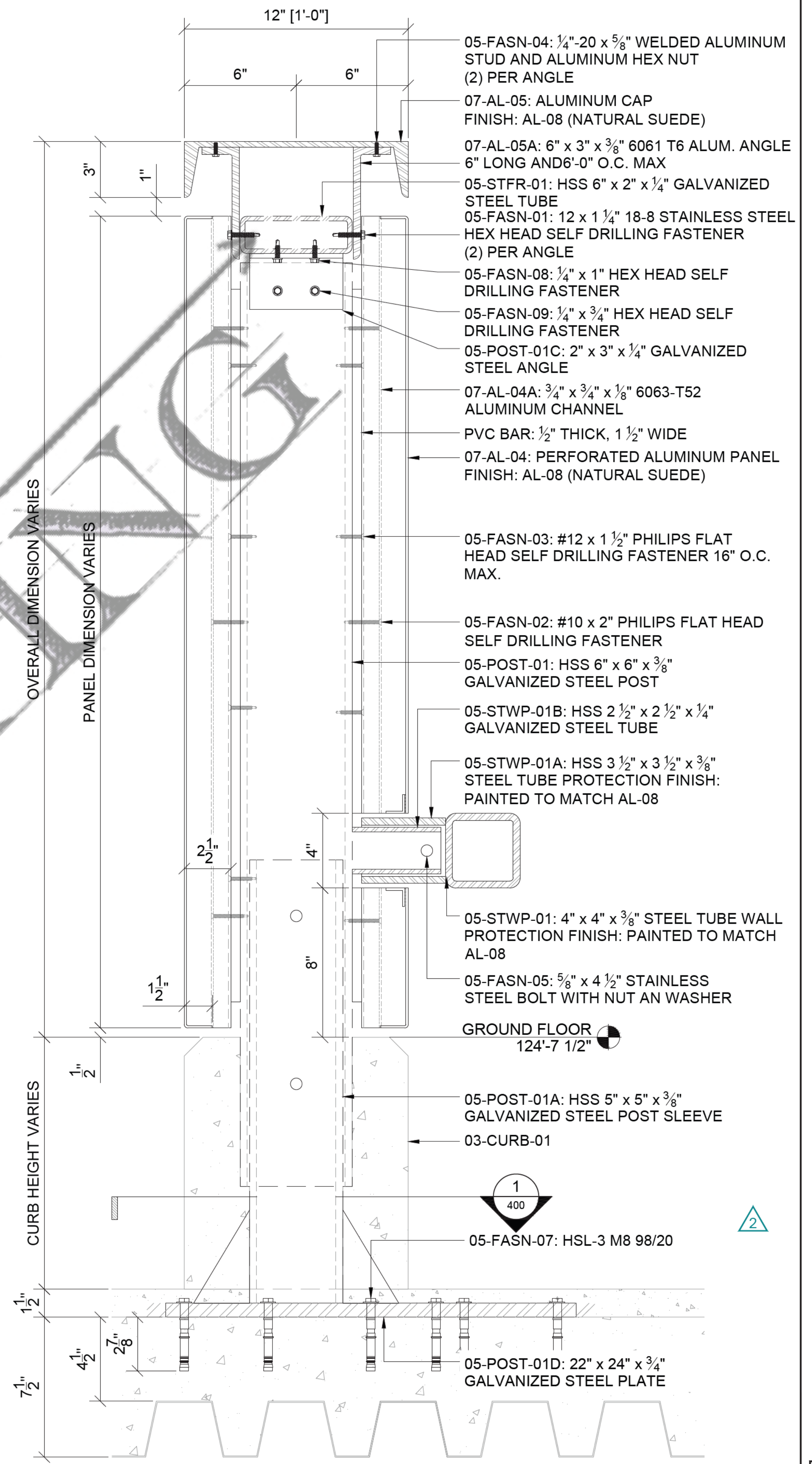
TITLE:	ELEVATION & SECTION
SCALE:	1 1/2" = 1'-0"
SHEET #:	203



1 SECTION AT METAL STUD FRAMING
SCALE: 3" = 1'-0"



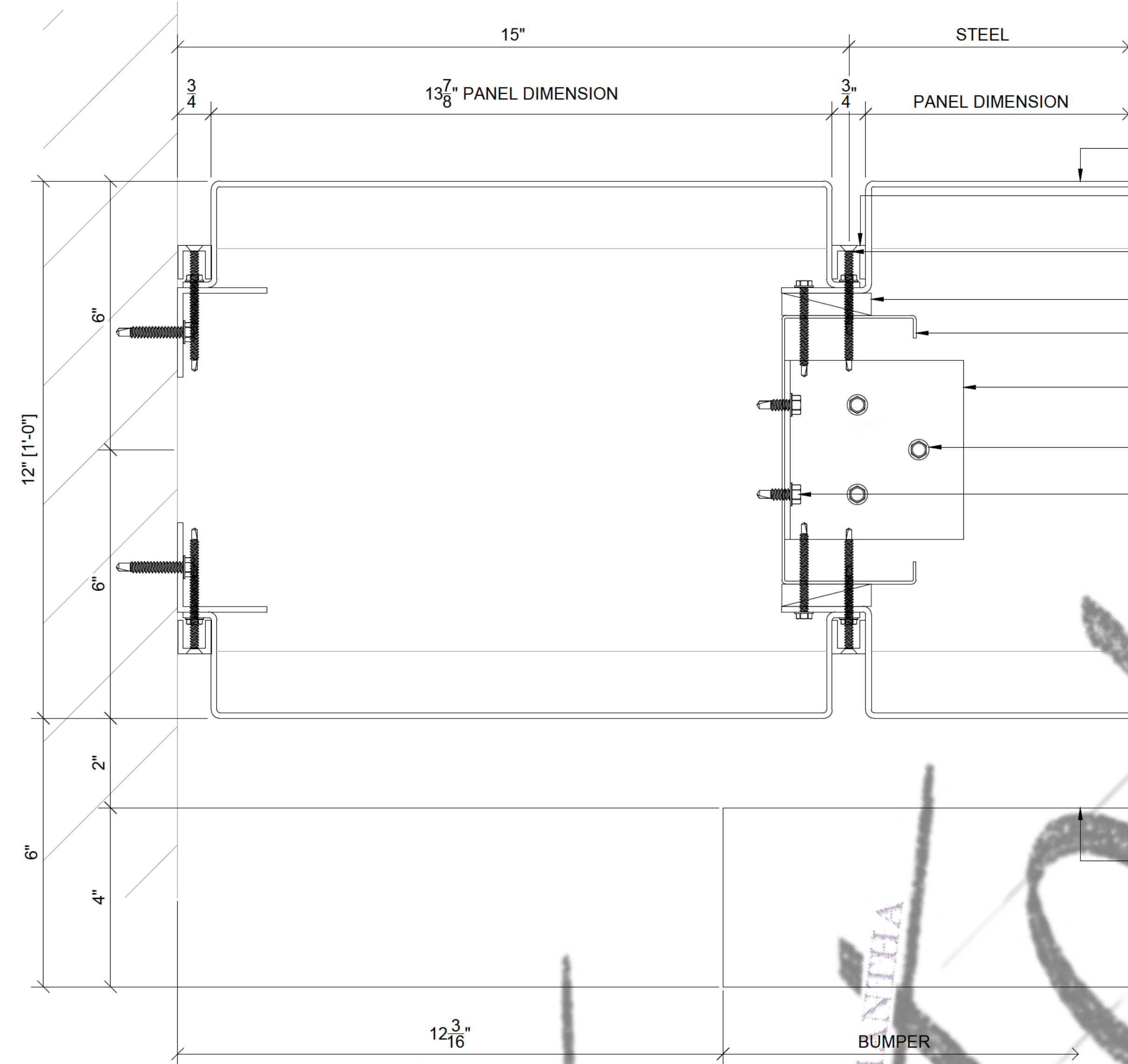
2 NON-IMPACT ZONE SECTION AT STEEL POST
SCALE: 3" = 1'-0"



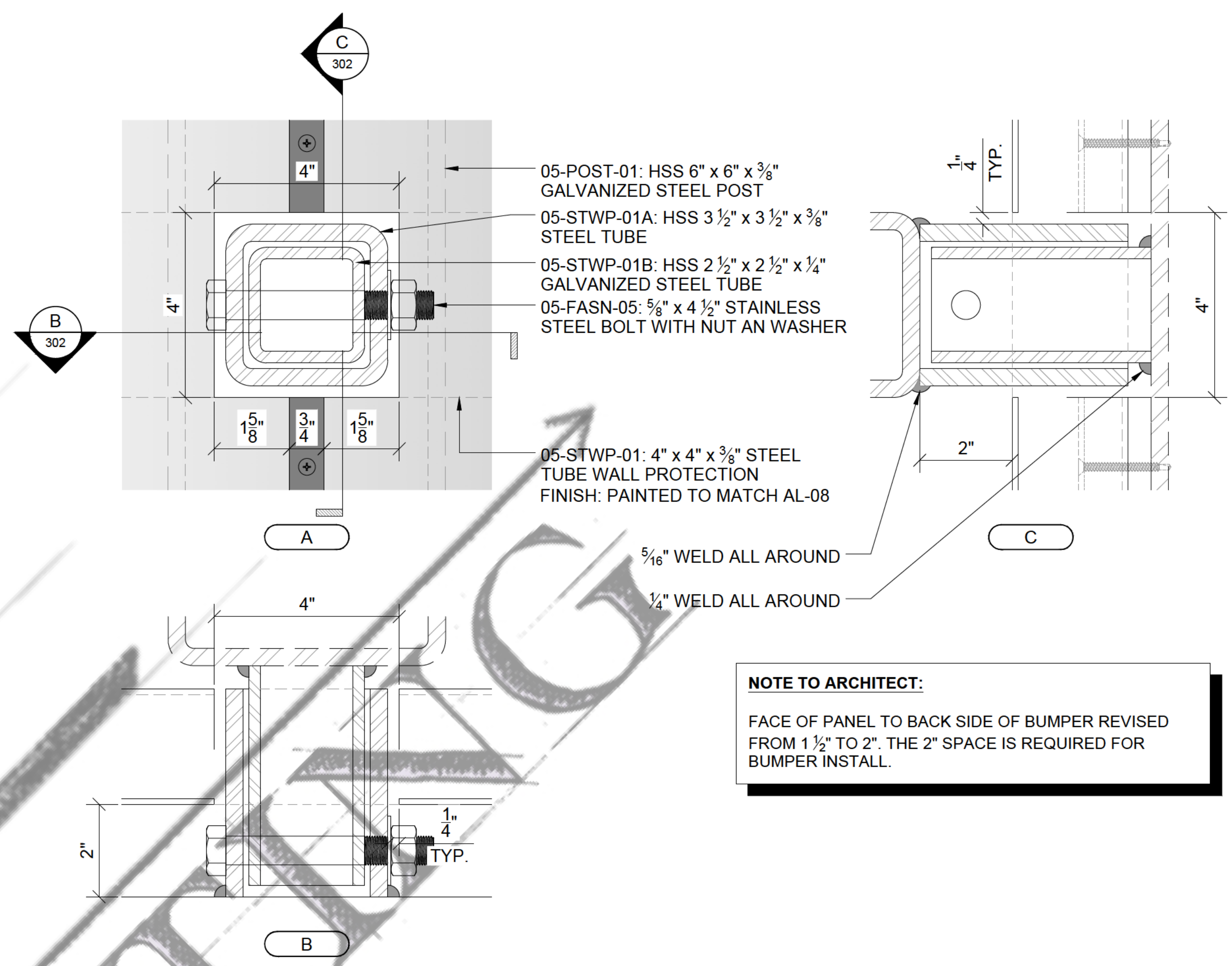
3 NON-IMPACT ZONE SECTION AT WALL PROTECTION
SCALE: 3" = 1'-0"

SAMPLE DRAWINGS

TITLE:	SECTIONS & DETAILS
SCALE:	3" = 1'-0"
SHEET #:	300



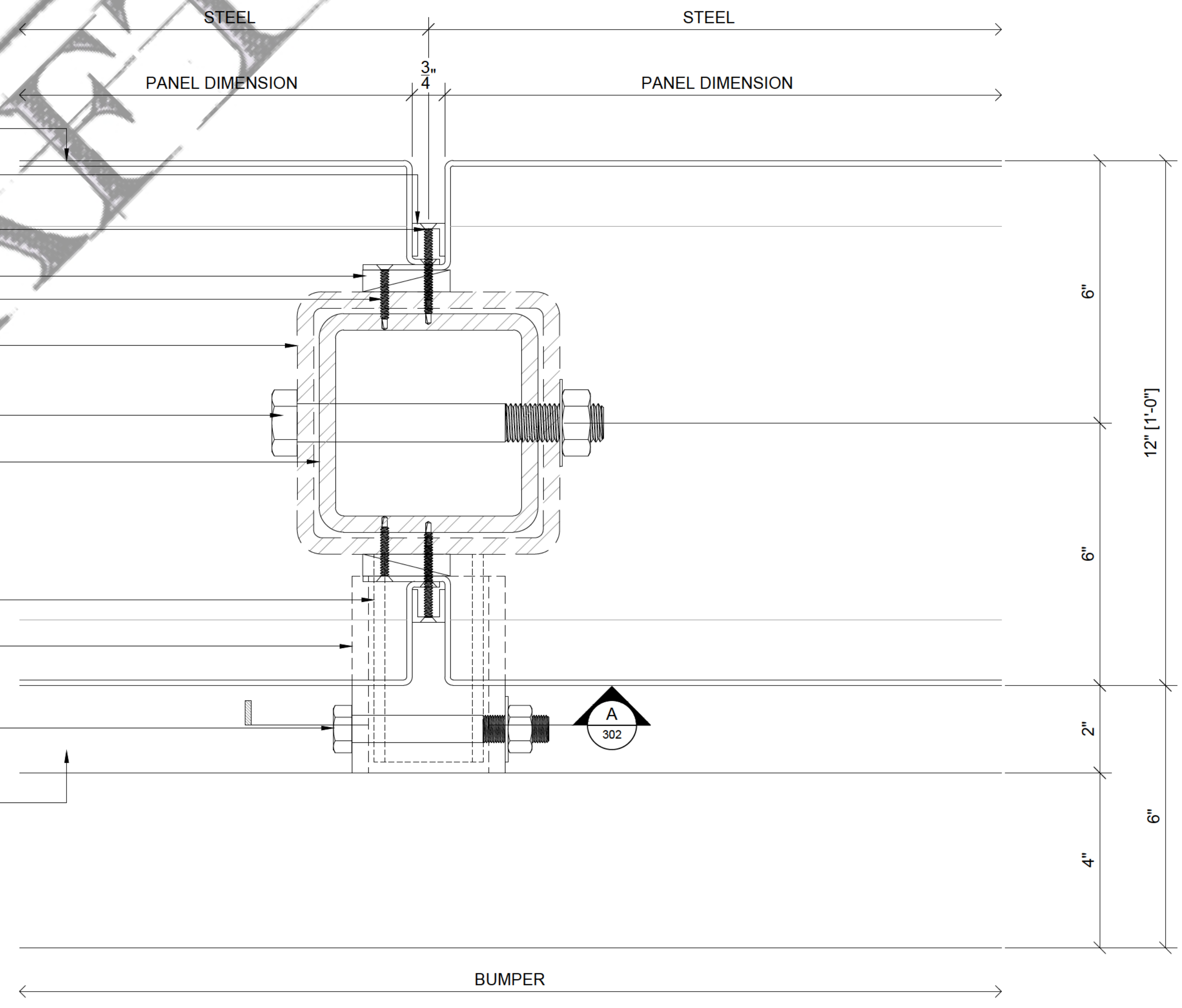
- 07-AL-04: PERFORATED ALUMINUM PANEL FINISH: AL-08 (NATURAL SUEDE)
- 07-AL-04A: 3/4" x 3/4" x 1/8" 6063-T52 ALUMINUM CHANNEL
- 05-FASN-02: #10 x 2" PHILIPS FLAT HEAD SELF DRILLING FASTENER
- PVC BAR: 1/2" THICK, 1 1/2" WIDE
- 05-MSF-01: CLARK DIETRICH 600-S-300-68-50KSI-CP60-UNPUNCHED
- 07-AL-05B: 4" x 4" x 1/8" THK. ALUMINUM ANGLE
- 05-FASN-10: 1/4" x 2 1/4" HILTI KWIK CON II
- 05-FASN-09: 1/4" x 3/4" HEX HEAD SELF DRILLING FASTENER



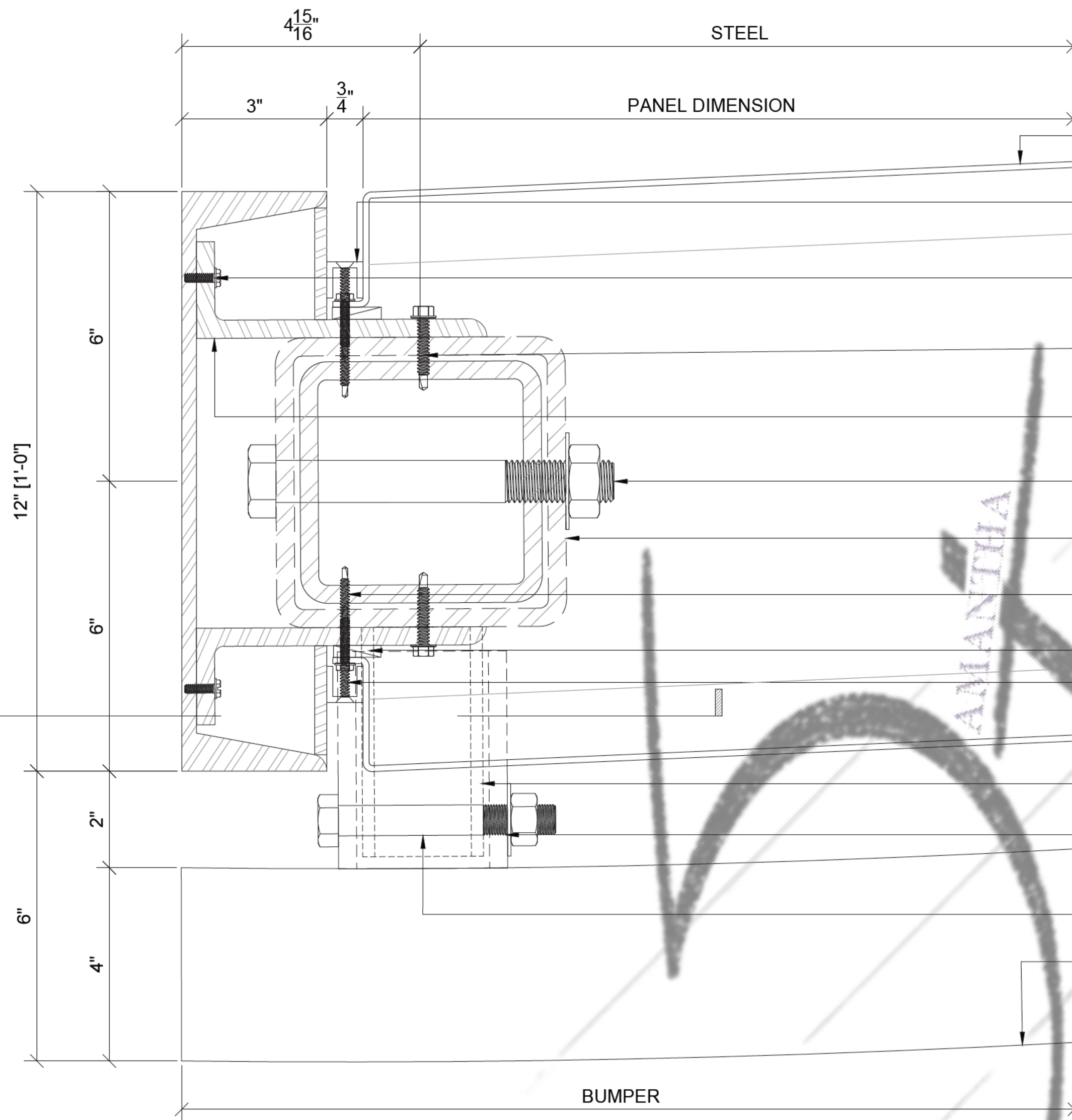
NOTE TO ARCHITECT:
 FACE OF PANEL TO BACK SIDE OF BUMPER REVISED FROM 1 1/2" TO 2". THE 2" SPACE IS REQUIRED FOR BUMPER INSTALL.

6 DETAIL AT WALL TERMINATION
 SCALE: 6" = 1'-0"

- 05-STWP-01: 4" x 4" x 3/8" STEEL TUBE WALL PROTECTION FINISH: PAINTED TO MATCH AL-08
- 07-AL-04: PERFORATED ALUMINUM PANEL FINISH: AL-08 (NATURAL SUEDE)
- 07-AL-04A: 3/4" x 3/4" x 1/8" 6063-T52 ALUMINUM CHANNEL
- 05-FASN-02: #10 x 2" PHILIPS FLAT HEAD SELF DRILLING FASTENER
- PVC BAR: 1/2" THICK, 1 1/2" WIDE
- 05-FASN-03: #12 x 1 1/2" PHILIPS FLAT HEAD SELF DRILLING FASTENER 16" O.C. MAX.
- 05-POST-01: HSS 6" x 6" x 3/8" GALVANIZED STEEL POST
- 05-FASN-06: 7/8" x 7" GALVANIZED STEEL BOLT WITH NUT AN WASHER
- 05-POST-01A: HSS 5" x 5" x 3/8" GALVANIZED STEEL POST SLEEVE
- 05-STWP-01B: HSS 2 1/2" x 2 1/2" x 1/4" GALVANIZED STEEL TUBE
- 05-STWP-01A: HSS 3 1/2" x 3 1/2" x 3/8" STEEL TUBE PROTECTION FINISH: PAINTED TO MATCH AL-08
- 05-FASN-05: 5/8" x 4 1/2" STAINLESS STEEL BOLT WITH NUT AN WASHER
- 05-STWP-01: 4" x 4" x 3/8" STEEL TUBE WALL PROTECTION FINISH: PAINTED TO MATCH AL-08

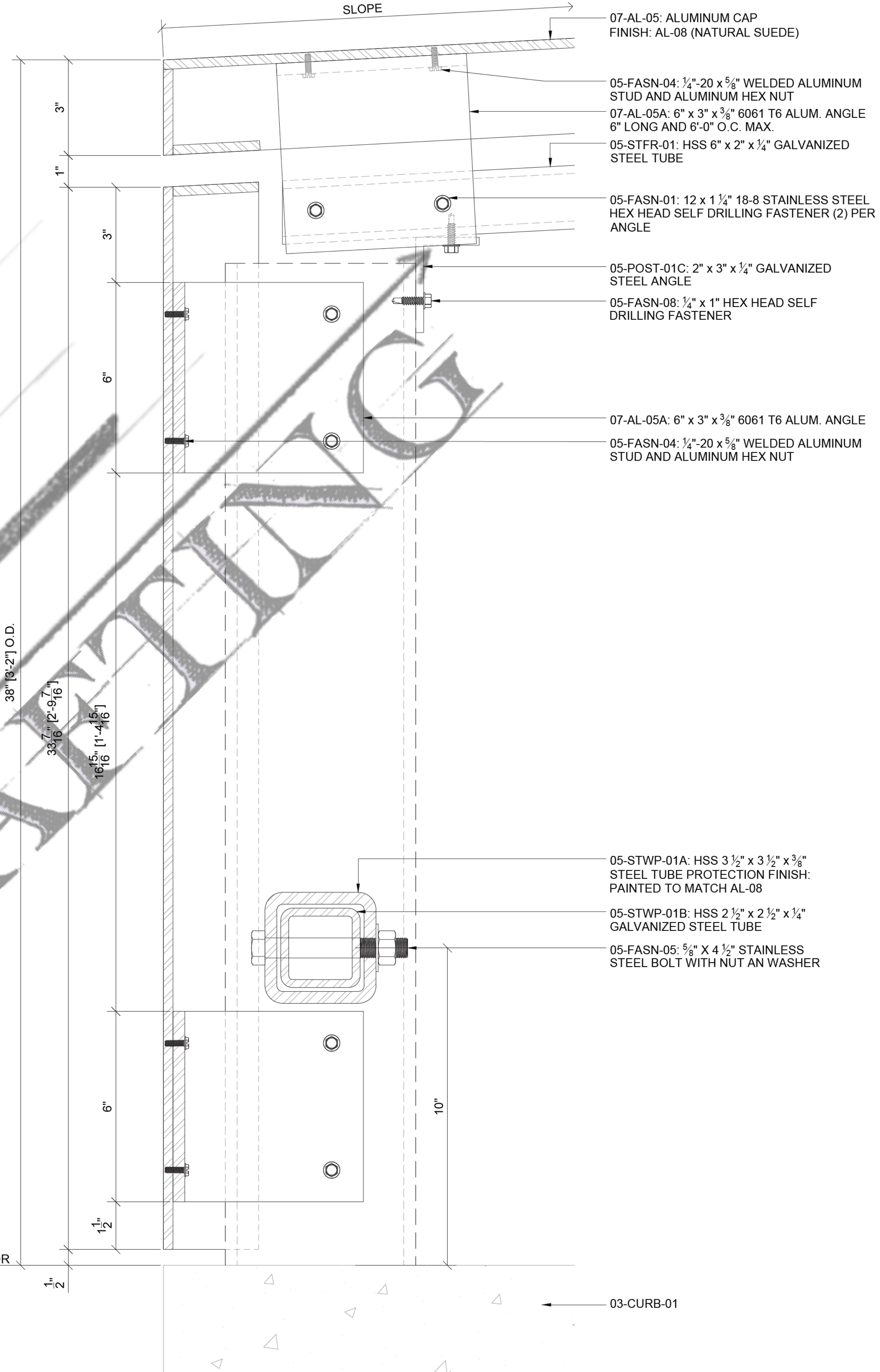


7 DETAIL AT PANEL AND BUMPER
 SCALE: 6" = 1'-0"



8 DETAIL AT END CAP
SCALE: 6" = 1'-0"

- 07-AL-04: PERFORATED ALUMINUM PANEL FINISH: AL-08 (NATURAL SUEDE)
- 07-AL-04A: 3/4" x 3/4" x 1/8" 6063-T52 ALUMINUM CHANNEL
- 05-FASN-04: 1/4"-20 x 5/8" WELDED ALUMINUM STUD AND ALUMINUM HEX NUT (2) PER ANGLE
- 05-FASN-01: 12 X 1 1/4" 18-8 STAINLESS STEEL HEX HEAD SELF DRILLING FASTENER
- 07-AL-05A: 6" x 3" x 3/8" 6061 T6 ALUM. ANGLE
- 05-FASN-06: 7/8" X 7" GALVANIZED STEEL BOLT WITH NUT AN WASHER
- 05-POST-01: HSS 6" x 6" x 3/8" GALVANIZED STEEL POST
- 05-FASN-03: #12 X 1 1/2" PHILIPS FLAT HEAD SELF DRILLING FASTENER 16" O.C. MAX.
- SHIM
- 05-FASN-02: #10 X 2" PHILIPS FLAT HEAD SELF DRILLING FASTENER
- 05-STWP-01B: HSS 2 1/2" x 2 1/2" x 1/4" STEEL TUBE
- 05-STWP-01A: HSS 3 1/2" x 3 1/2" x 3/8" STEEL TUBE PROTECTION FINISH: PAINTED TO MATCH AL-08
- 05-FASN-05: 5/8" X 4 1/2" STAINLESS STEEL BOLT WITH NUT AN WASHER
- 05-STWP-01: 4" x 4" x 3/8" STEEL TUBE WALL PROTECTION FINISH: PAINTED TO MATCH AL-08



9 SECTION AT END CAP
SCALE: 6" = 1'-0"

- 07-AL-05: ALUMINUM CAP FINISH: AL-08 (NATURAL SUEDE)
- 05-FASN-04: 1/4"-20 x 5/8" WELDED ALUMINUM STUD AND ALUMINUM HEX NUT
- 07-AL-05A: 6" x 3" x 3/8" 6061 T6 ALUM. ANGLE 6" LONG AND 6'-0" O.C. MAX.
- 05-STFR-01: HSS 6" x 2" x 1/4" GALVANIZED STEEL TUBE
- 05-FASN-01: 12 X 1 1/4" 18-8 STAINLESS STEEL HEX HEAD SELF DRILLING FASTENER (2) PER ANGLE
- 05-POST-01C: 2" x 3" x 1/4" GALVANIZED STEEL ANGLE
- 05-FASN-08: 1/4" x 1" HEX HEAD SELF DRILLING FASTENER
- 07-AL-05A: 6" x 3" x 3/8" 6061 T6 ALUM. ANGLE
- 05-FASN-04: 1/4"-20 x 5/8" WELDED ALUMINUM STUD AND ALUMINUM HEX NUT
- 05-STWP-01A: HSS 3 1/2" x 3 1/2" x 3/8" STEEL TUBE PROTECTION FINISH: PAINTED TO MATCH AL-08
- 05-STWP-01B: HSS 2 1/2" x 2 1/2" x 1/4" GALVANIZED STEEL TUBE
- 05-FASN-05: 5/8" X 4 1/2" STAINLESS STEEL BOLT WITH NUT AN WASHER

GROUND FLOOR
124'-7 1/2"

03-CURB-01

SAMPLE DRAWINGS

TITLE:	SECTIONS & DETAILS
SCALE:	6" = 1'-0"
SHEET #:	303