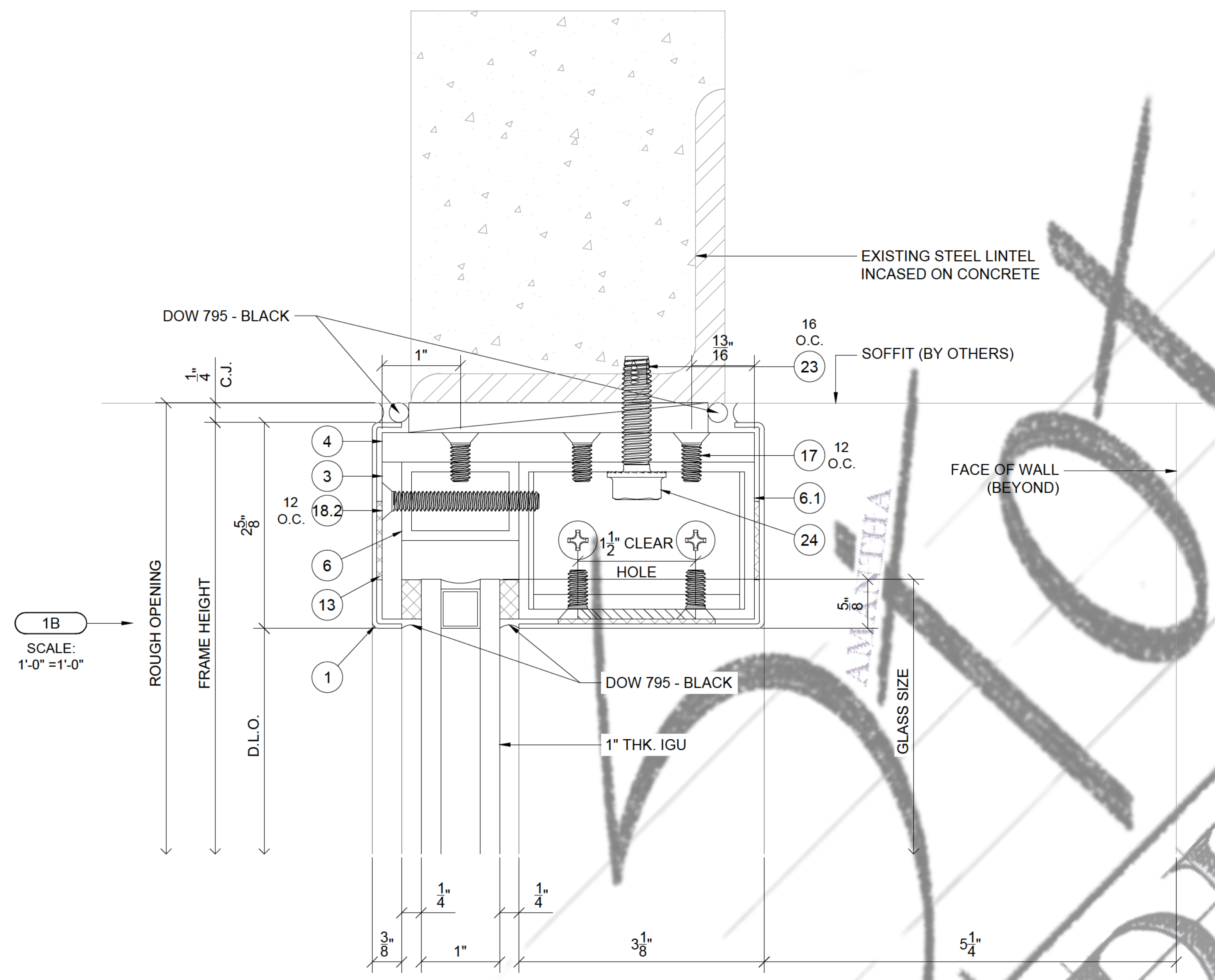
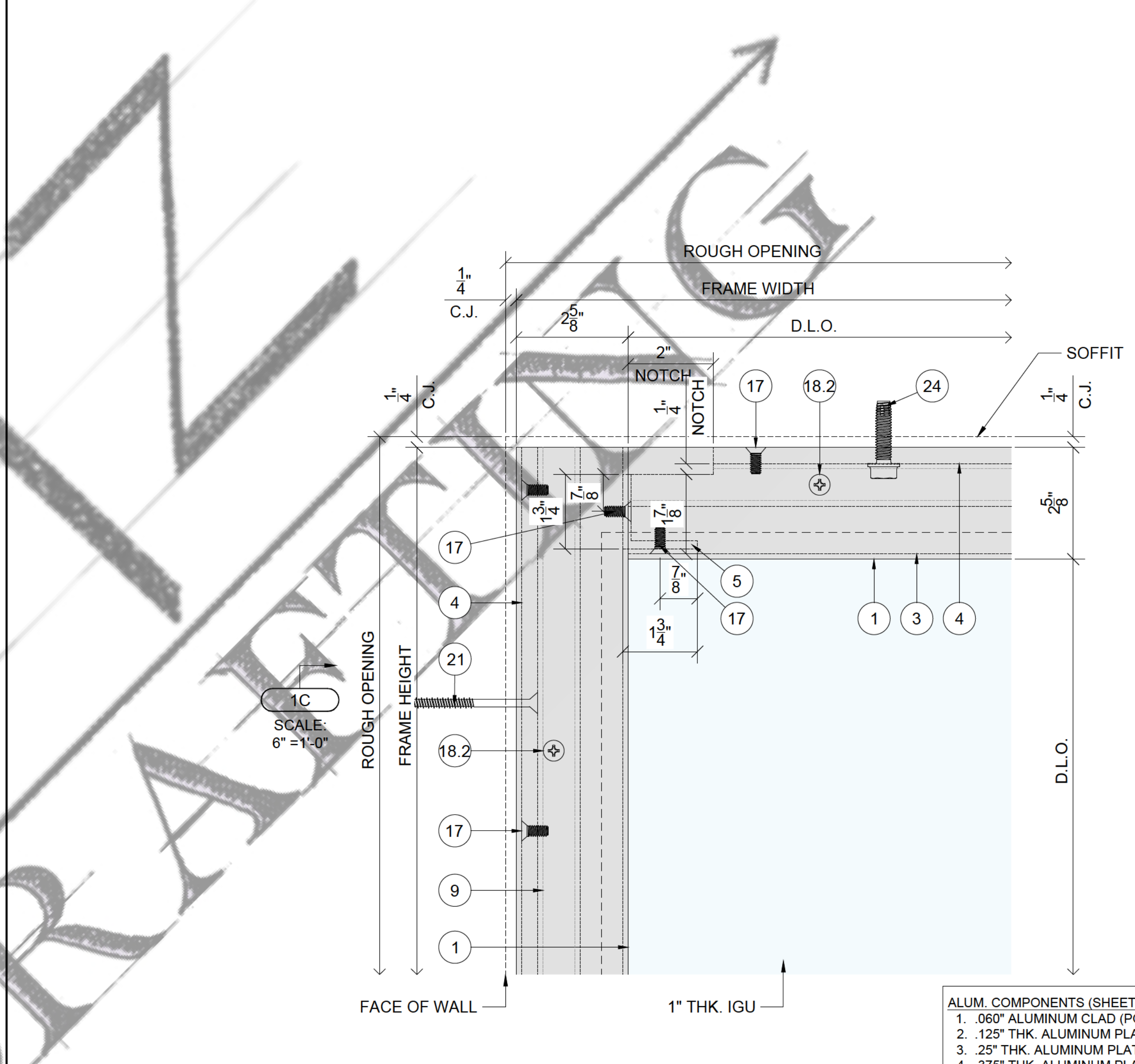


DOOR HARDWARE SCHEDULE				
QTY.	HARDWARE ITEM	MODEL NUMBER	MANUFACTURER	FINISH
2 SETS	CUSTOM DOOR PULLS	CUSTOM 1/2" THK. ALUM.	-	PAINTED
2	TOP WALING BEAM PIVOT WIARM	HD8062	DORMA	613
2	BOTTOM ARM	7421	DORMA	-
2	FLOOR CLOSER W/ TERRAZZO PAN	BTS80-D-4-80030-AMS-TP80 CH-626	DORMA	613
-	ASTRAGAL (WEATHER STRIP)	S771D	PEMCO	DARK BROWN
2	NON-LOCKING DUST PROOF KEEPER	570	ROCKWOOD	BLACK
1	MANUAL FLUSH BOLT W/STRIKE AND GUIDE	FB457 (24" LONG - BTM OF DOOR)	IVES	613
2	ELECTRIC BOLT LOCK	1091	SDC	DARK OIL RUBBED BRZ.
1	CYLINDER LOCK COVER PLATE	6755102	BALDWIN	OIL RUBBED BRONZE
1	DEADLOCK/STRIKE	MS1850S/4000	ADAMS RITE	313
1	CYLINDER	ICM-7	GMS	10B
1	THRESHOLD BOLT	4015	ADAMS RITE	-

SAMPLE DRAWINGS



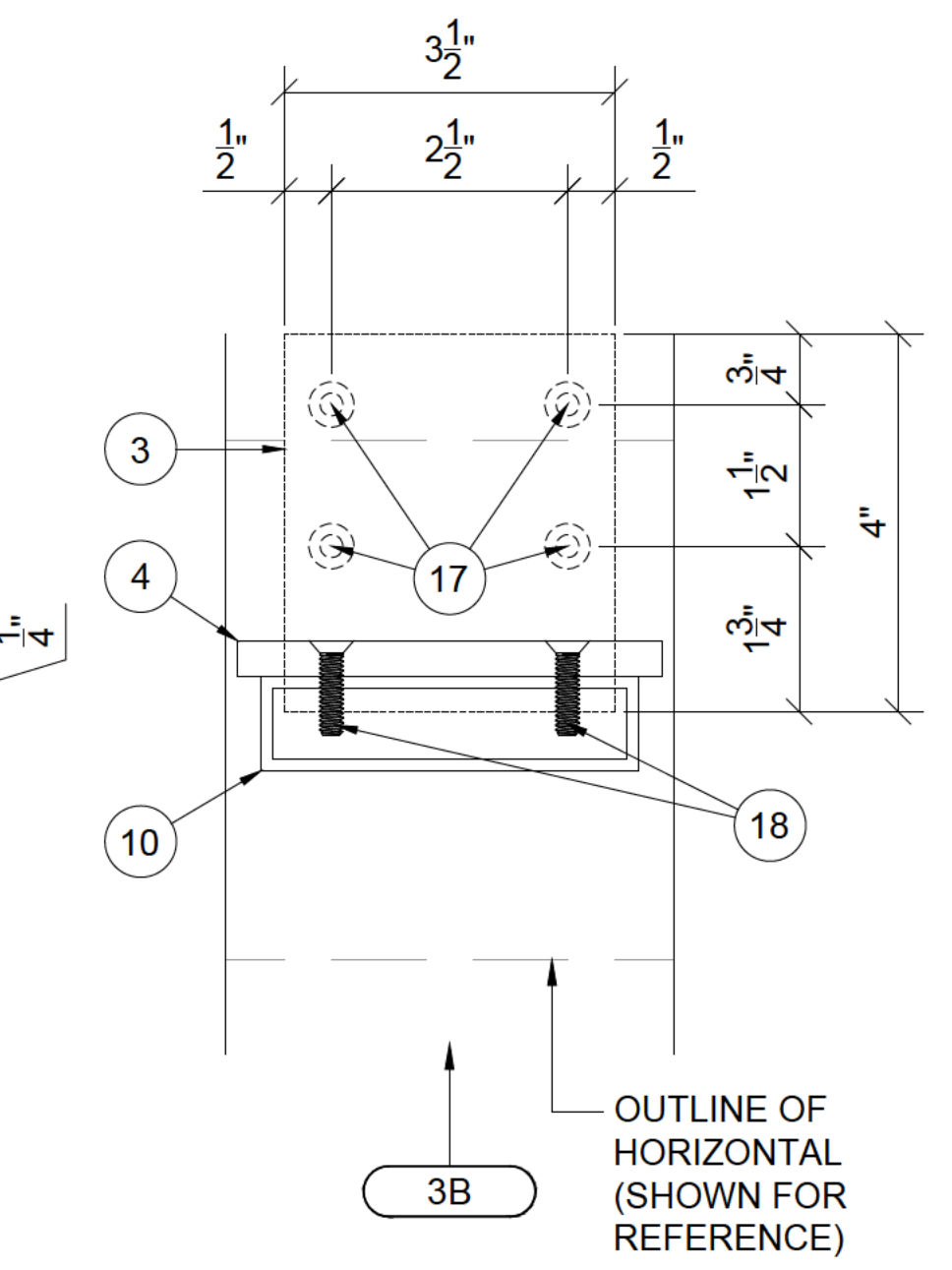
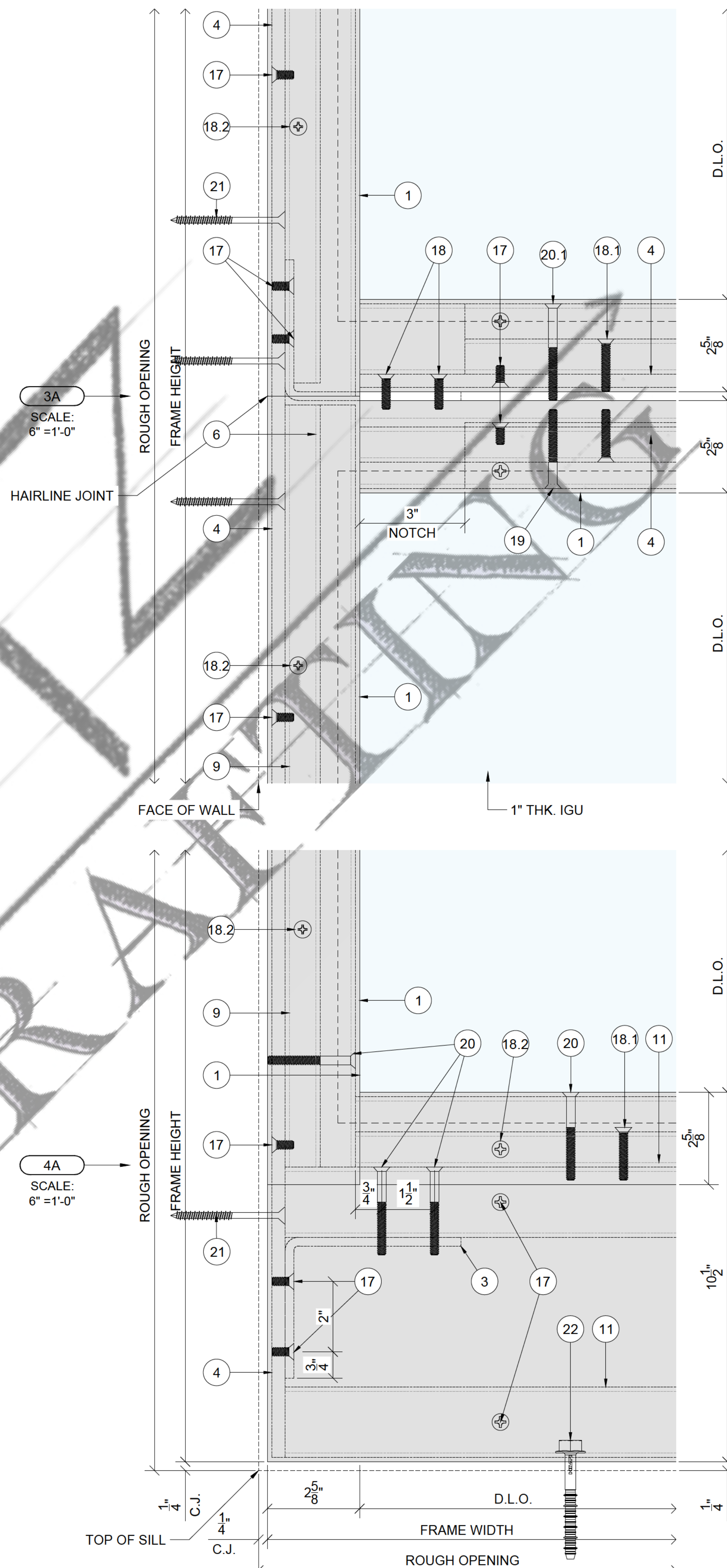
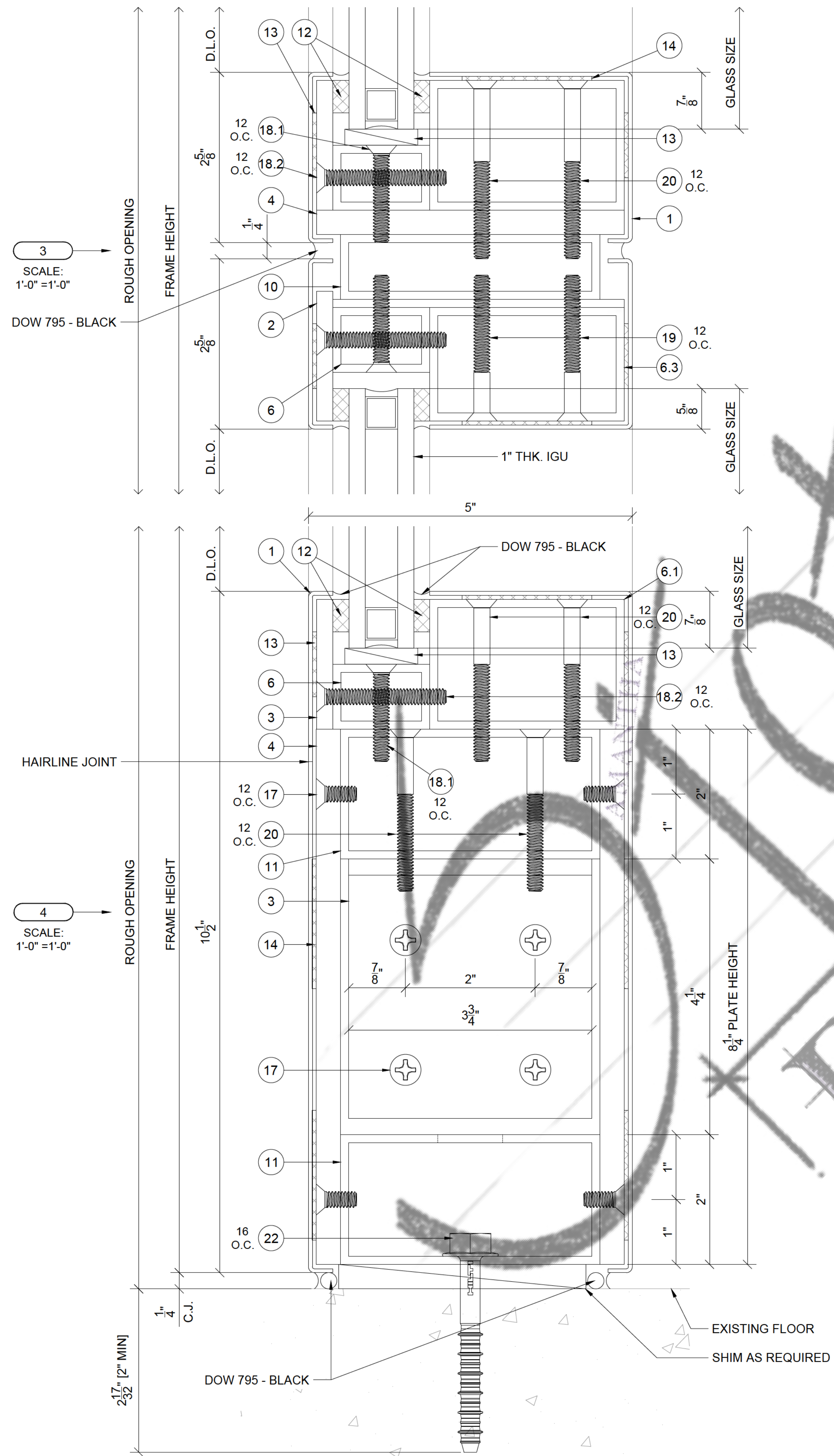
1B  
SCALE:  
1'-0" = 1'-0"



1C  
SCALE:  
6" = 1'-0"

- ALUM. COMPONENTS (SHEETS 5052-H32, TUBE & ANGLES 6063-T5):**
1. .060" ALUMINUM CLAD (POWDER COATED)
  2. .125" THK. ALUMINUM PLATES & BRAKE SHAPES (MILL FINISH)
  3. .25" THK. ALUMINUM PLATES & BRAKE SHAPES (MILL FINISH)
  4. .375" THK. ALUMINUM PLATES & BRAKE SHAPES (MILL FINISH)
  5. 1 3/4" x 1 3/4" x 3/8" THK. ALUMINUM ANGLE (MILL FINISH)
  6. 1" x 1 1/2" x 3/8" THK. ALUMINUM TUBE (MILL FINISH)
  - 6.1. 2" x 3" x 3/8" THK. ALUMINUM TUBE (MILL FINISH)
  - 6.2. 1 1/4" DIA. ALUMINUM TUBE .065" WALL (MILL FINISH)
  - 6.3. 1 3/4" x 3" x 3/8" THK ALUMINUM TUBE (MILL FINISH)
  7. NOT USED
  8. 1 3/4" x 1 3/4" x 3/8" THK. ALUMINUM TUBE (MILL FINISH)
  9. 1 1/2" x 2" x 3/8" THK. ALUMINUM TUBE (MILL FINISH)
  10. 1" x 4" x 3/8" THK. ALUMINUM TUBE (MILL FINISH)
  11. 2" x 4" x 3/8" THK. ALUMINUM TUBE (MILL FINISH)
- MISC.:**
12. 3/4" THK. x 1/2" WIDE SINGLE SIDED TAPE (GRAINGER 744D50)
  - 12.1. 3/8" THK. x 1/4" WIDE SINGLE SIDED TAPE (GRAINGER 497L37)
  13. 1/8" THK. x 1" WIDE DOUBLE SIDED TAPE (GRAINGER 15D145)
  14. 1/8" THK. x 2" WIDE DOUBLE SIDED TAPE (GRAINGER 15C177)
  15. 1/2" THK. x 1 1/8" WIDE SETTING BLOCK
  16. 1/2" THK. x 1 1/2" WIDE SETTING BLOCK
- FASTENERS:**
17. 3/4"-20 x 3/8" FH 410 ST/ST MS
  18. 3/4"-20 x 1" FH 410 ST/ST MS
  - 18.1. 1/4"-20 x 1 1/2" FH 410 ST/ST MS
  - 18.2. 3/4"-20 x 2" FH 410 ST/ST MS
  19. 3/4"-20 x 2 1/4" FH 410 ST/ST MS
  20. 3/4"-20 x 2 1/2" FH 410 ST/ST MS
  - 20.1. 1/4"-20 x 2 3/4" FH 410 ST/ST MS
  21. 3/4"-20 x 2 3/4" HILTI KWIK CON II
  22. 3/8" x 3" HILTI KWIK HUZ EZ CS
  23. #12 x 1 1/2" ELCO BI-FLEX EBN240
  24. 3/8"-16 x 1 1/2" TAPFLEX

# SAMPLE DRAWINGS



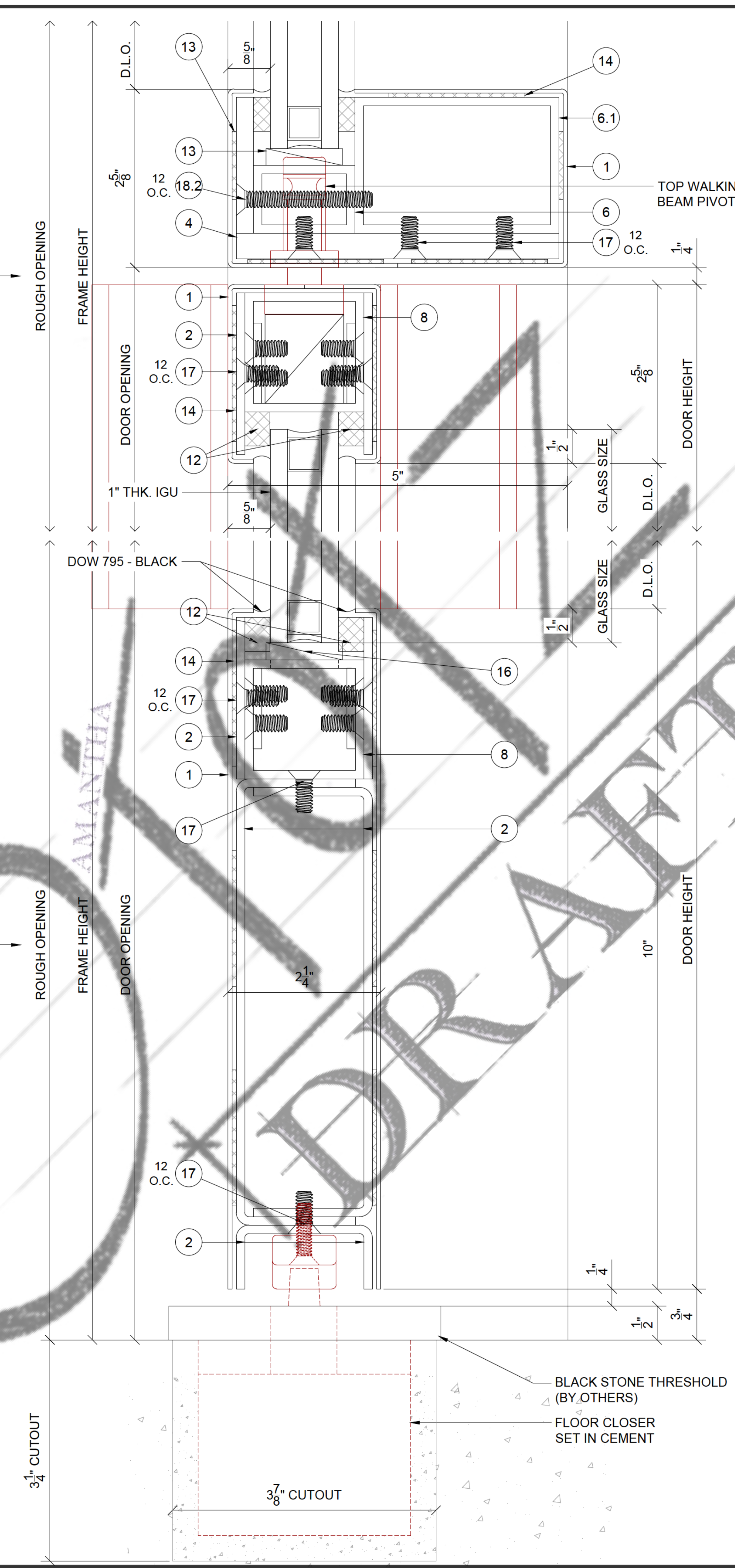
- ALUM. COMPONENTS (SHEETS 5052-H32, TUBE & ANGLES 6063-T5):**
- .060" ALUMINUM CLAD (POWDER COATED)
  - .125" THK. ALUMINUM PLATES & BRAKE SHAPES (MILL FINISH)
  - .25" THK. ALUMINUM PLATES & BRAKE SHAPES (MILL FINISH)
  - .375" THK. ALUMINUM PLATES & BRAKE SHAPES (MILL FINISH)
  - 1 3/4" x 1 3/4" x 1/8" THK. ALUMINUM ANGLE (MILL FINISH)
  - 1" x 1 1/2" x 3/8" THK. ALUMINUM TUBE (MILL FINISH)
  - 2" x 3" x 1/8" THK. ALUMINUM TUBE (MILL FINISH)
  - 1 1/2" DIA. ALUMINUM TUBE .065" WALL (MILL FINISH)
  - 1 3/4" x 3" x 1/8" THK. ALUMINUM TUBE (MILL FINISH)
  - NOT USED
  - 1 3/4" x 1 3/4" x 1/8" THK. ALUMINUM TUBE (MILL FINISH)
  - 1 1/2" x 2" x 1/8" THK. ALUMINUM TUBE (MILL FINISH)
  - 1" x 4" x 1/8" THK. ALUMINUM TUBE (MILL FINISH)
  - 2" x 4" x 1/8" THK. ALUMINUM TUBE (MILL FINISH)
- MISC.:**
12. 1/4" THK. x 1/2" WIDE SINGLE SIDED TAPE (GRAINGER 744D50)
  12. 1/8" THK. x 1/4" WIDE SINGLE SIDED TAPE (GRAINGER 497L37)
  13. 1/8" THK. x 1" WIDE DOUBLE SIDED TAPE (GRAINGER 15D145)
  14. 1/8" THK. x 2" WIDE DOUBLE SIDED TAPE (GRAINGER 15C177)
  15. 1/2" THK. x 1 1/8" WIDE SETTING BLOCK
  16. 1/2" THK. x 1 1/2" WIDE SETTING BLOCK
- FASTENERS:**
17. 3/4"-20 x 3/8" FH 410 ST/ST MS
  18. 1/4"-20 x 1" FH 410 ST/ST MS
  - 18.1. 1/2"-20 x 1 1/2" FH 410 ST/ST MS
  - 18.2. 3/4"-20 x 2" FH 410 ST/ST MS
  19. 1/4"-20 x 2 1/4" FH 410 ST/ST MS
  20. 1/4"-20 x 2 1/2" FH 410 ST/ST MS
  - 20.1. 1/4"-20 x 2 3/4" FH 410 ST/ST MS
  21. 1/4"-20 x 2 3/4" HILTI KWIK CON II
  22. 3/8" x 3" HILTI KWIK HUZ EZ CS
  23. #12 x 1 1/2" ELCO BI-FLEX EBN240
  24. 3/8"-16 x 1 1/2" TAPFLEX

# SAMPLE DRAWINGS



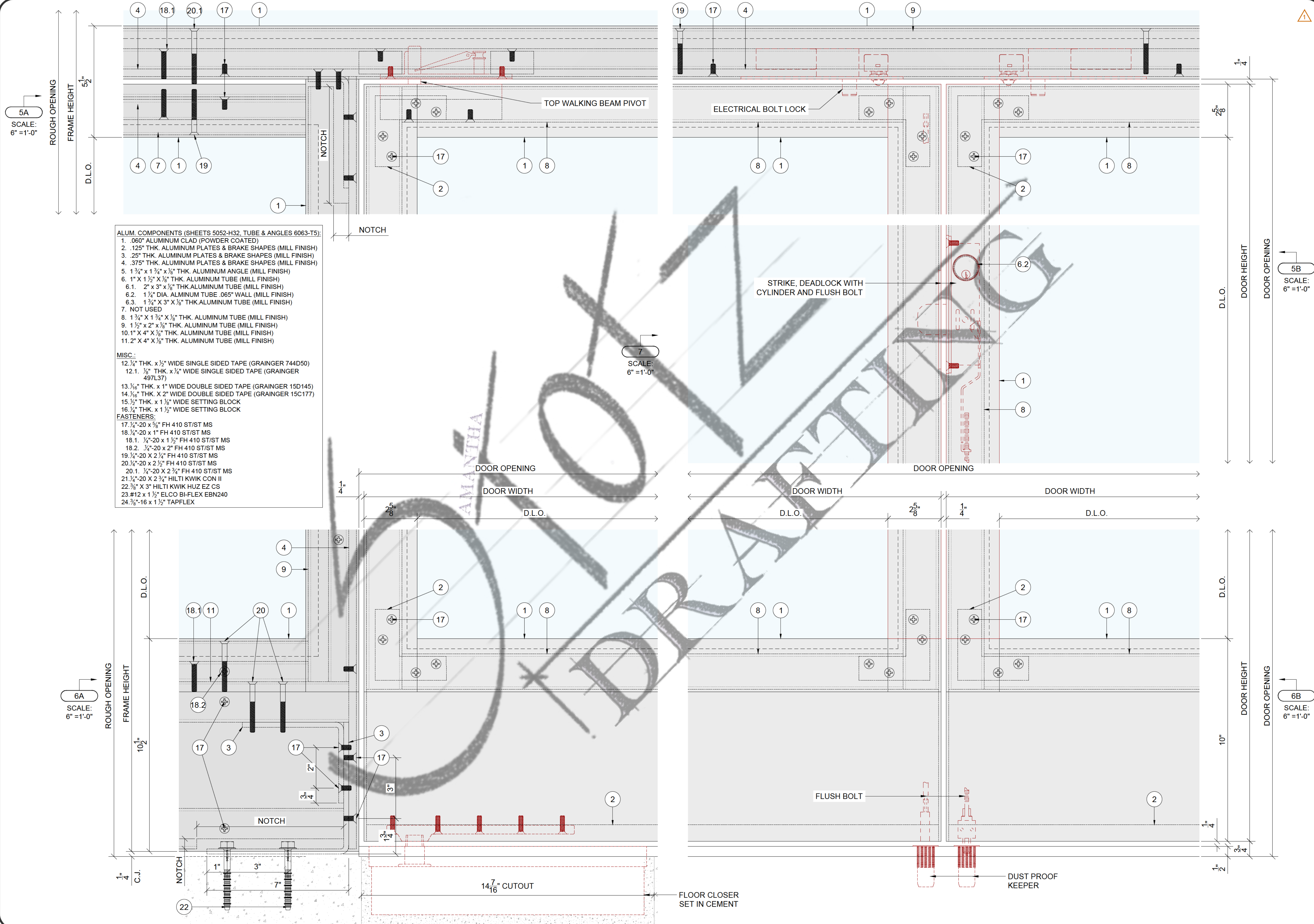
5  
SCALE:  
1'-0" = 1'-0"

6  
SCALE:  
1'-0" = 1'-0"



- ALUM. COMPONENTS (SHEETS 5052-H32, TUBE & ANGLES 6063-T5):
1. .060" ALUMINUM CLAD (POWDER COATED)
  2. .125" THK. ALUMINUM PLATES & BRAKE SHAPES (MILL FINISH)
  3. .25" THK. ALUMINUM PLATES & BRAKE SHAPES (MILL FINISH)
  4. .375" THK. ALUMINUM PLATES & BRAKE SHAPES (MILL FINISH)
  5. 1 3/4" x 1 3/4" x 1/8" THK. ALUMINUM ANGLE (MILL FINISH)
  6. 1" x 1 1/2" x 1/8" THK. ALUMINUM TUBE (MILL FINISH)
  - 6.1. 2" x 3" x 1/8" THK. ALUMINUM TUBE (MILL FINISH)
  - 6.2. 1 1/4" DIA. ALUMINUM TUBE .065" WALL (MILL FINISH)
  - 6.3. 1 3/4" x 3" x 1/8" THK. ALUMINUM TUBE (MILL FINISH)
  7. NOT USED
  8. 1 3/4" x 1 3/4" x 1/8" THK. ALUMINUM TUBE (MILL FINISH)
  9. 1 1/2" x 2" x 1/8" THK. ALUMINUM TUBE (MILL FINISH)
  10. 1" x 4" x 1/8" THK. ALUMINUM TUBE (MILL FINISH)
  11. 2" x 4" x 1/8" THK. ALUMINUM TUBE (MILL FINISH)
- MISC.:
12. 1/2" THK. x 1/2" WIDE SINGLE SIDED TAPE (GRAINGER 744D50)
  - 12.1. 1/8" THK. x 1/4" WIDE SINGLE SIDED TAPE (GRAINGER 497L37)
  13. 3/16" THK. x 1" WIDE DOUBLE SIDED TAPE (GRAINGER 15D145)
  14. 3/16" THK. x 2" WIDE DOUBLE SIDED TAPE (GRAINGER 15C177)
  15. 1/2" THK. x 1 1/8" WIDE SETTING BLOCK
  16. 1/2" THK. x 1 1/2" WIDE SETTING BLOCK
- FASTENERS:
17. 1/2"-20 x 3/8" FH 410 ST/ST MS
  18. 1/2"-20 x 1" FH 410 ST/ST MS
  - 18.1. 1/4"-20 x 1 1/2" FH 410 ST/ST MS
  - 18.2. 1/4"-20 x 2" FH 410 ST/ST MS
  19. 1/2"-20 x 2 1/2" FH 410 ST/ST MS
  20. 1/2"-20 x 2 1/2" FH 410 ST/ST MS
  - 20.1. 1/4"-20 x 2 3/8" FH 410 ST/ST MS
  21. 1/2"-20 x 2 3/4" HILTI KWIK CON II
  22. 3/8" x 3" HILTI KWIK HUZ EZ CS
  23. #12 x 1 1/2" ELCO BI-FLEX EBN240
  24. 3/8"-16 x 1 1/2" TAPFLEX

# SAMPLE DRAWINGS



- ALUM. COMPONENTS (SHEETS 5052-H32, TUBE & ANGLES 6063-T5):**
1. .060" ALUMINUM CLAD (POWDER COATED)
  2. .125" THK. ALUMINUM PLATES & BRAKE SHAPES (MILL FINISH)
  3. .25" THK. ALUMINUM PLATES & BRAKE SHAPES (MILL FINISH)
  4. .375" THK. ALUMINUM PLATES & BRAKE SHAPES (MILL FINISH)
  5. 1 3/4" x 1 3/4" x 1/8" THK. ALUMINUM ANGLE (MILL FINISH)
  6. 1" x 1 1/2" x 1/8" THK. ALUMINUM TUBE (MILL FINISH)
  - 6.1. 2" x 3" x 1/8" THK ALUMINUM TUBE (MILL FINISH)
  - 6.2. 1 1/2" DIA. ALUMINUM TUBE .065" WALL (MILL FINISH)
  - 6.3. 1 3/4" x 3" x 1/8" THK. ALUMINUM TUBE (MILL FINISH)
  7. NOT USED
  8. 1 3/4" x 1 3/4" x 1/8" THK. ALUMINUM TUBE (MILL FINISH)
  9. 1 1/2" x 2" x 1/8" THK. ALUMINUM TUBE (MILL FINISH)
  10. 1" x 4" x 1/8" THK. ALUMINUM TUBE (MILL FINISH)
  11. 2" x 4" x 1/8" THK. ALUMINUM TUBE (MILL FINISH)
- MISC.:**
12. 1/4" THK. x 1/2" WIDE SINGLE SIDED TAPE (GRAINGER 744D50)
  - 12.1. 1/8" THK. x 1/2" WIDE SINGLE SIDED TAPE (GRAINGER 497L37)
  13. 1/8" THK. x 1" WIDE DOUBLE SIDED TAPE (GRAINGER 15D145)
  14. 1/8" THK. x 2" WIDE DOUBLE SIDED TAPE (GRAINGER 15C177)
  15. 1/2" THK. x 1 1/8" WIDE SETTING BLOCK
  16. 1/2" THK. x 1 1/2" WIDE SETTING BLOCK
- FASTENERS:**
17. 1/4"-20 x 3/8" FH 410 ST/ST MS
  18. 1/4"-20 x 1" FH 410 ST/ST MS
  - 18.1. 1/4"-20 x 1 1/2" FH 410 ST/ST MS
  - 18.2. 1/4"-20 x 2" FH 410 ST/ST MS
  19. 1/4"-20 x 2 1/2" FH 410 ST/ST MS
  20. 1/4"-20 x 2 3/4" FH 410 ST/ST MS
  - 20.1. 1/4"-20 x 2 3/4" FH 410 ST/ST MS
  21. 1/4"-20 x 2 3/4" HILTI KWIK CON II
  22. 3/8" x 3" HILTI KWIK HUZ EZ CS
  23. #12 x 1 1/2" ELCO BI-FLEX EBN240
  24. 3/8"-16 x 1 1/2" TAPFLEX

SAMPLE DRAWINGS

