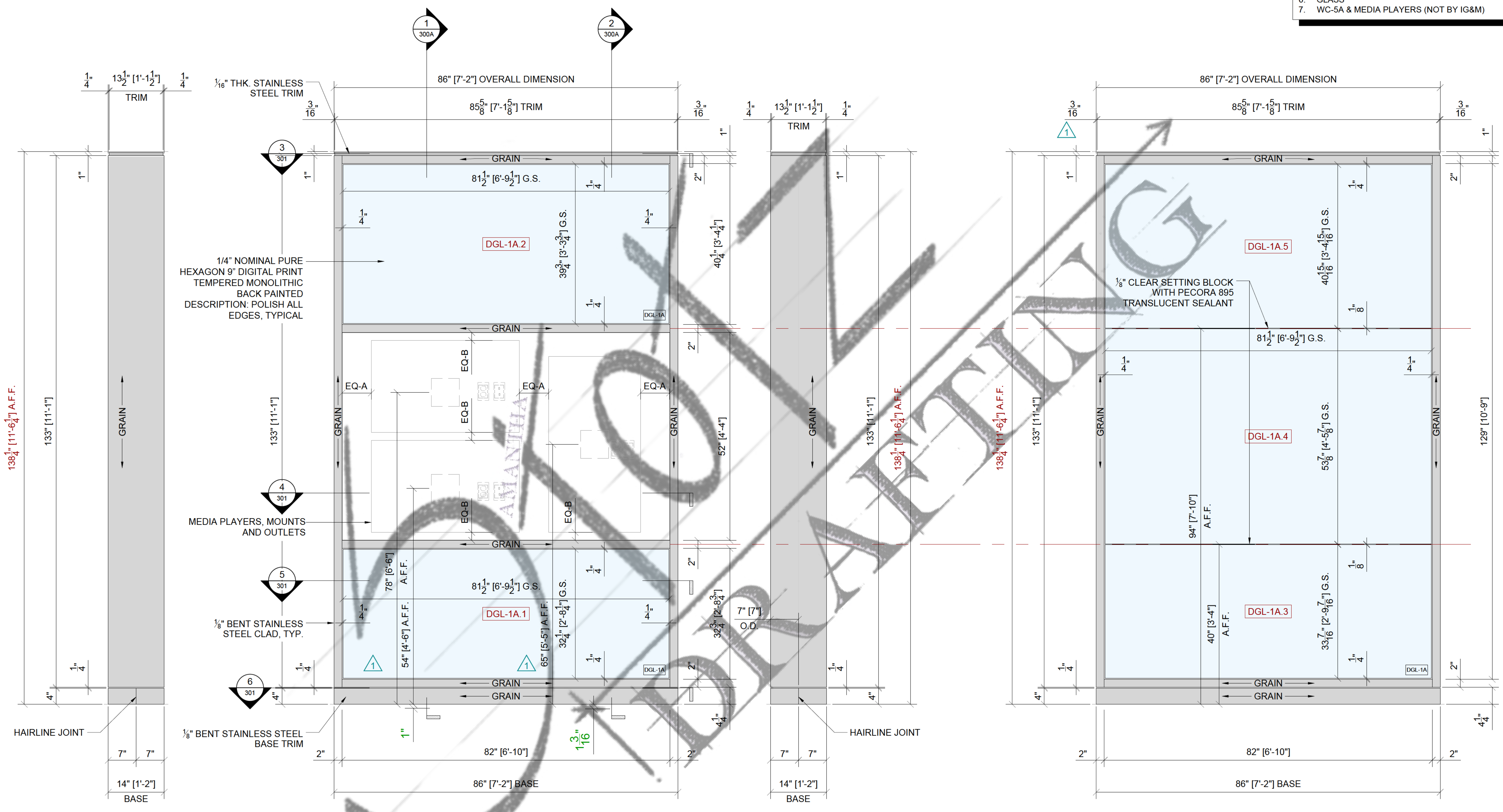


- INSTALLATION ORDER:**
1. STEEL PLATES AND HSS
 2. ELECTRICAL REQUIREMENTS (NOT BY IG&M)
 3. STAINLESS STEEL BASE TRIM & BLOCKING
 4. STAINLESS STEEL CLAD AND 16GA. TRIM
 5. PLYWOOD
 6. GLASS
 7. WC-5A & MEDIA PLAYERS (NOT BY IG&M)



1 PYLON SIDE ELEVATION

2 PYLON FRONT ELEVATION
SCALE: 1" = 1'-0"

3 PYLON SIDE ELEVATION

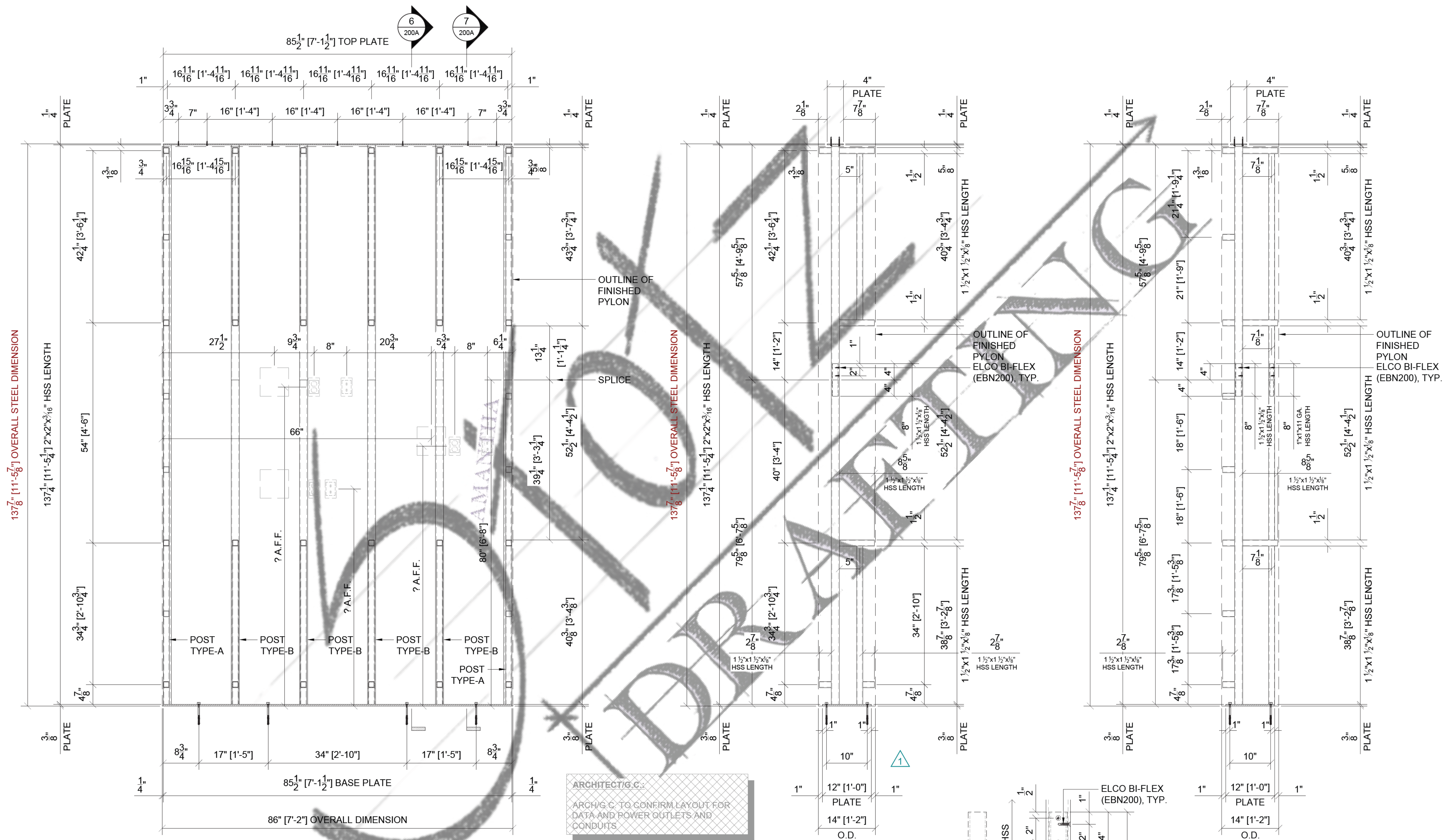
4 PYLON BACK ELEVATION

NOTE TO ARCHITECT:
VERTICAL GLASS JOINT REQUIRED DUE TO MAX GLASS SIZE OF 84" W x 130" H

SAMPLE DRAWINGS

TITLE:	ELEVATIONS
SCALE:	1" = 1'-0"
SHEET #:	200

NOTE:
ALL FASTENERS AND WELDS ARE TO BE CONFIRMED BY THE ENGINEERING CALCULATIONS.



137 7/8" [11'-5 7/8"] OVERALL STEEL DIMENSION

137 7/8" [11'-5 7/8"] OVERALL STEEL DIMENSION

137 7/8" [11'-5 7/8"] OVERALL STEEL DIMENSION

ARCHITECT/G.C.:
ARCH/G.C. TO CONFIRM LAYOUT FOR DATA AND POWER OUTLETS AND CONDUITS.

5 STEEL STRUCTURE PYLON FRONT ELEVATION
SCALE: 1" = 1'-0"

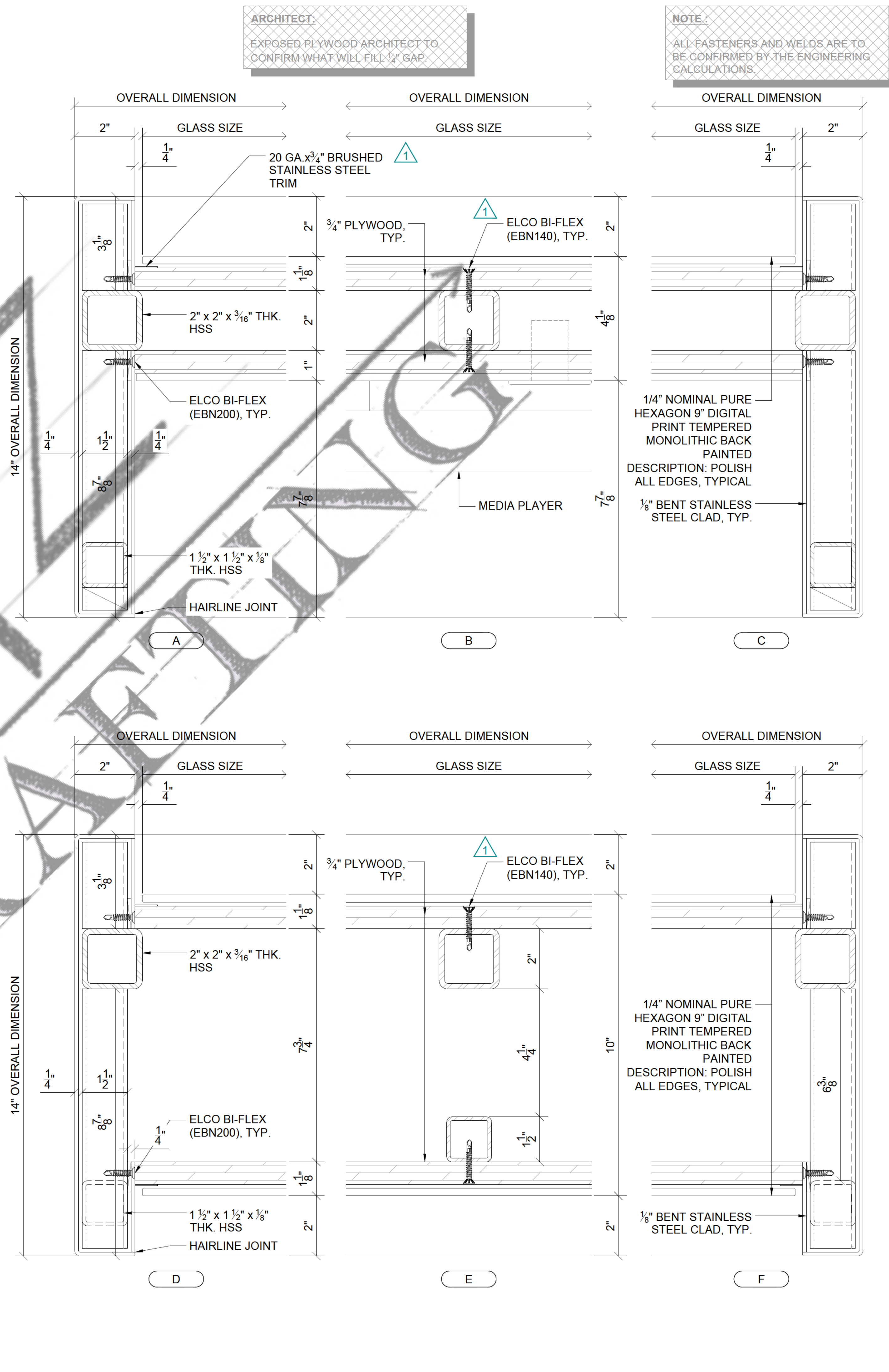
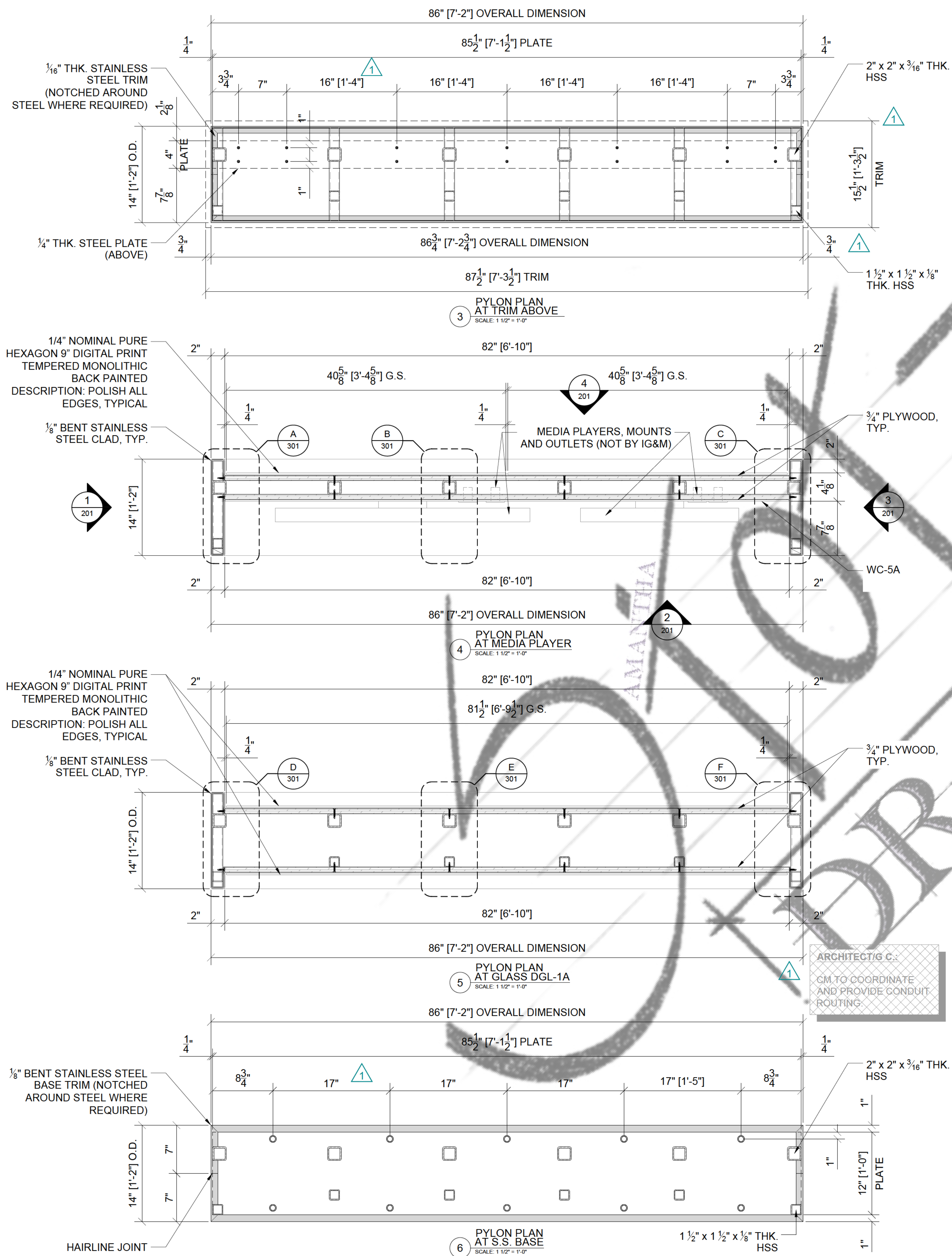
6 STEEL STRUCTURE PYLON POST TYPE-B
SCALE: 1" = 1'-0"

7 STEEL STRUCTURE PYLON POST TYPE-A
SCALE: 1" = 1'-0"

FABRICATION NOTE:

- ALL WELDS ON HSS 1 1/2" x 1 1/2" x 1/8" TO BE 3/8" ALL AROUND.
- ALL WELDS ON HSS 2" x 2" x 3/16" TO BE 3/16" ALL AROUND AT TOP AND BOTTOM MOUNTING PLATES.
- WELD AT SPLICES TO BE A BEVEL ALL AROUND. (SEE DETAIL A/200A)

SAMPLE DRAWINGS



SAMPLE DRAWINGS

TITLE:	PLAN & DETAILS
SCALE:	AS NOTED
SHEET #:	301